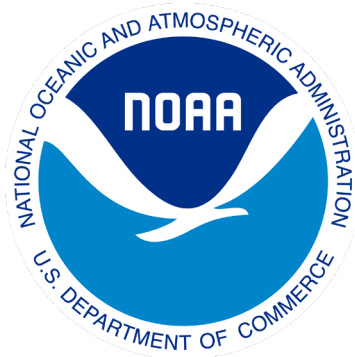


Deep Gulf Habitat Mats

This activity takes ocean lovers on a scavenger hunt for animals who reside in the twilight, dusk, and midnight zones.

Credit: NOAA, Marine Applied Research & Exploration

This activity was made possible through a grant from the National Marine Sanctuary Foundation with funding to restore natural resources injured by the 2010 *Deepwater Horizon (DWH)* oil spill from the DWH Open Ocean Trustees



**National
Marine Sanctuary
Foundation**

Habitat Mats: Outline

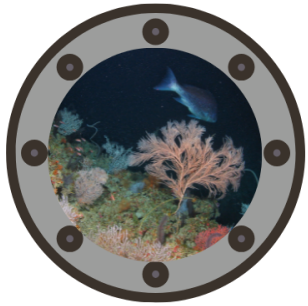
- In this document, you will find assets for each of the three zones (twilight, dusk, and midnight)
- Under each zone, you will find:
 - Species ID guides
 - Populated mats
 - Unpopulated mats
 - Species pages for unpopulated mats
- To print large versions of mats on vinyl banners:
 - Use banner files found here
<https://drive.google.com/drive/folders/12fuTBO3Htw7hFrV147N2eMfSJbR9tXWL>
 - Many websites offer affordable indoor banner options that deliver, and 60" W x 36" H size works well for these banner files
 - If you have questions or would like to request possibly receiving prints at no cost, email sasha.francis@noaa.gov

Habitat Mats: User Guide

- Populated mats: Use the species ID guides for the twilight, dusk, and midnight zones to find creatures in each habitat. When you find it, check off the animal on the ID guide! For an added challenge, include the number of each species you found.
- Unpopulated mats: Print and cut out each of the species from the species pages. Then mix them up in a pile and use the species ID guides, observations of adaptations, or discussions to figure out which zone they belong in and place them on the correct mat.

Twilight Zone Assets

- Outline of assets:
 - Species ID guide
 - Populated mat
 - Unpopulated mat
 - Species page 1
 - Species page 2
 - Species page 3
 - Species page 4
 - Species page 5
 - Species page 6



Identify sea creatures of the Gulf

160 - 980 ft deep

TWILIGHT ZONE!

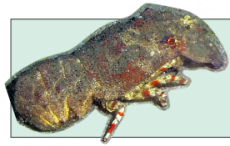
Instructions: Use this field guide to look for the creatures below in the habitat image. When you have spotted it, write down how many you see in the circle to the right of the photo and name!

Fish

Crustacean

Coral

Other



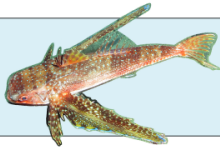
Slipper
lobster



Thesea
nivea



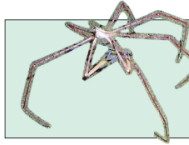
Hunchback
scorpionfish



Flying
gurnard



Red snapper



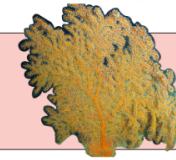
Arrow crab



Short bigeye



Spanish flag



Swiftia
exserta



Muricea
pendula



Trumpetfish



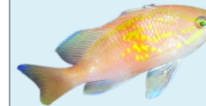
Marbled
grouper



Sharpnose
puffer



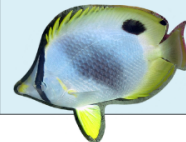
Reef
butterflyfish



Roughtongue
bass



Spotted
moray eel

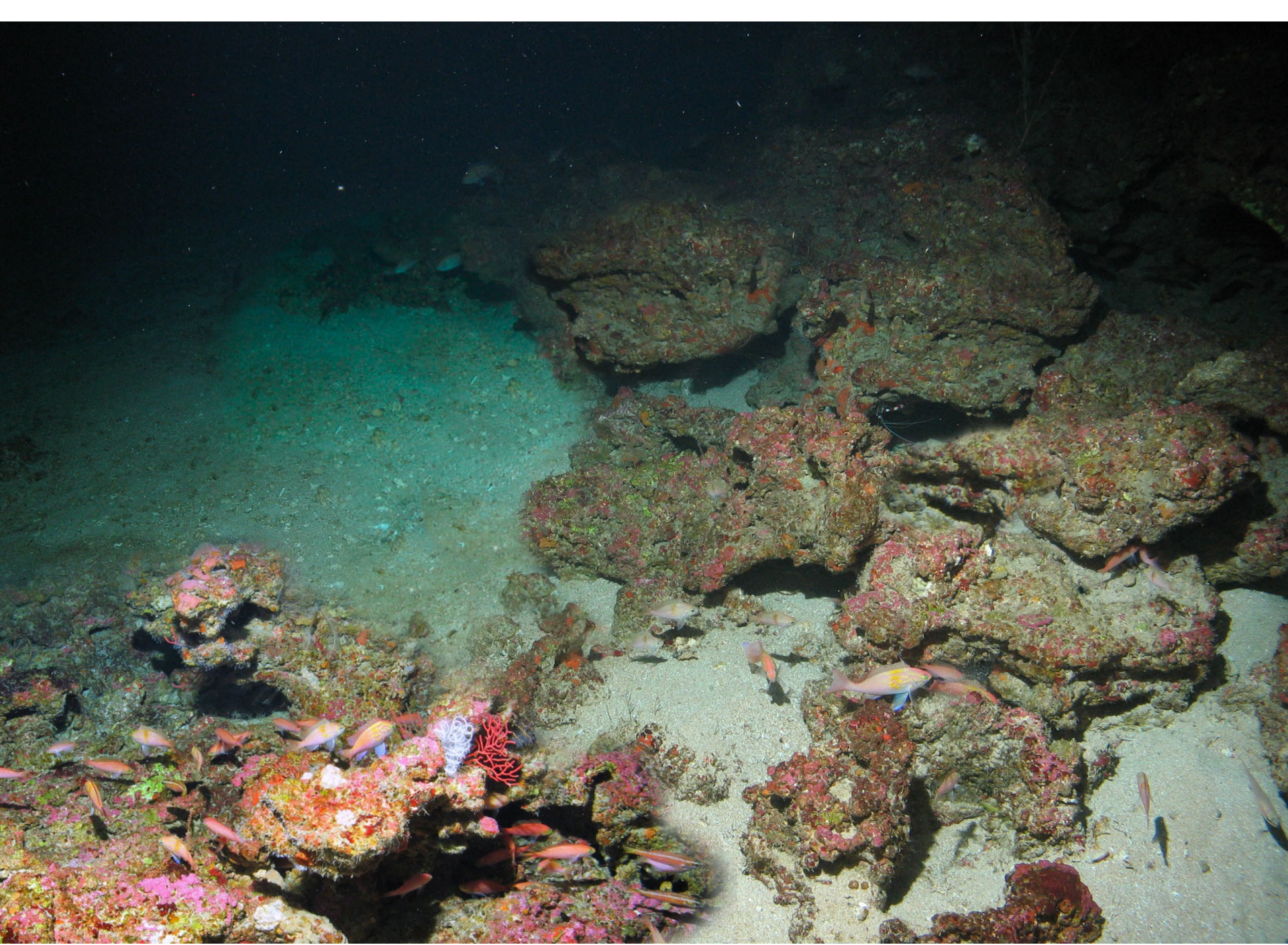


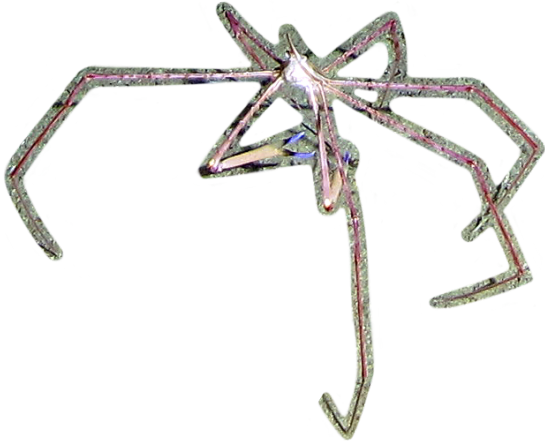
Spotfin
butterflyfish

This activity was made possible through a grant from the National Marine Sanctuary Foundation with funding to restore natural resources injured by the 2010 Deepwater Horizon (DWH) oil spill from the DWH Open Ocean Trustees

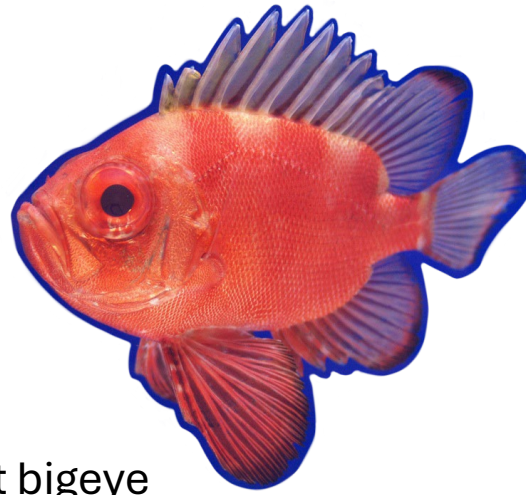








Arrow crab



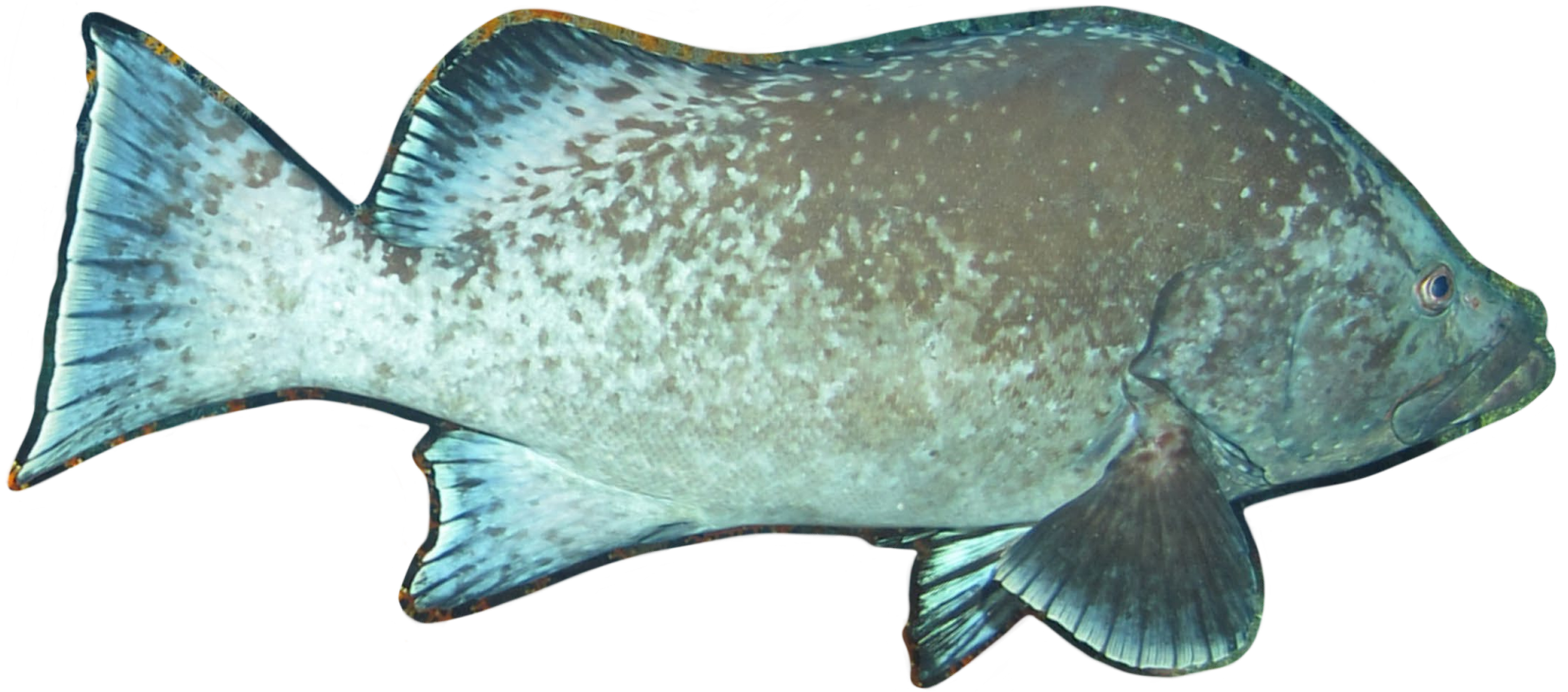
Short bigeye



Flying gurnard



Hunchback scorpionfish



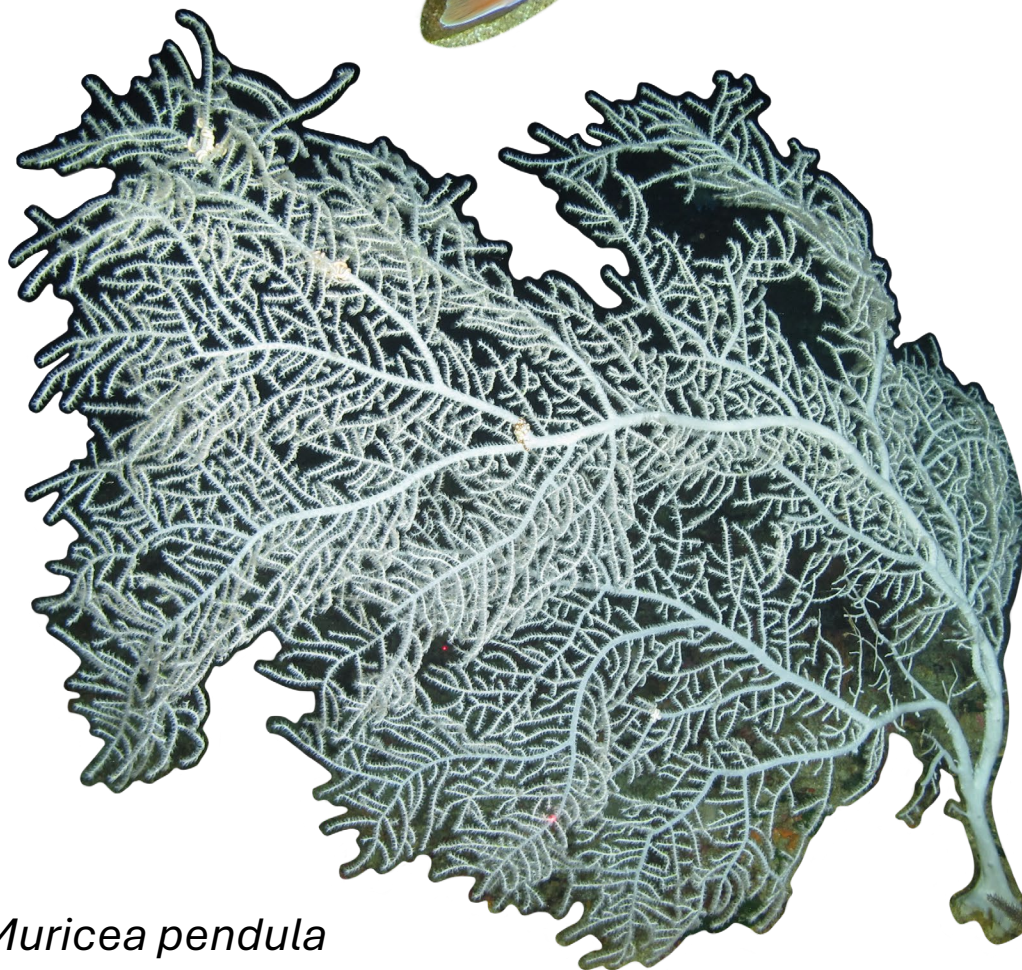
Marbled grouper



Red snapper



Reef butterflyfish



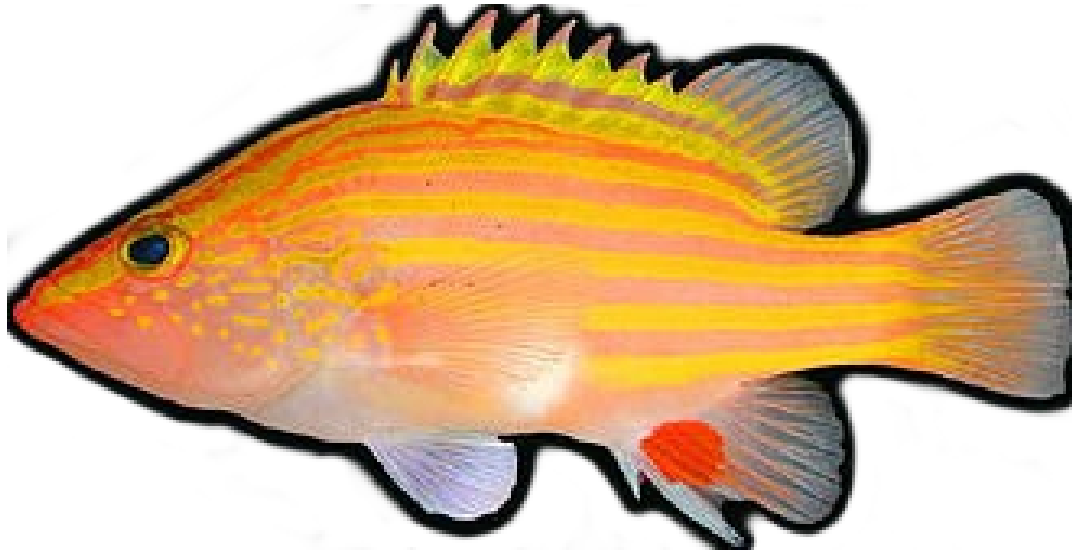
Muricea pendula



Slipper lobster



Sharpnose puffer



Spanish flag



Spotfin butterflyfish



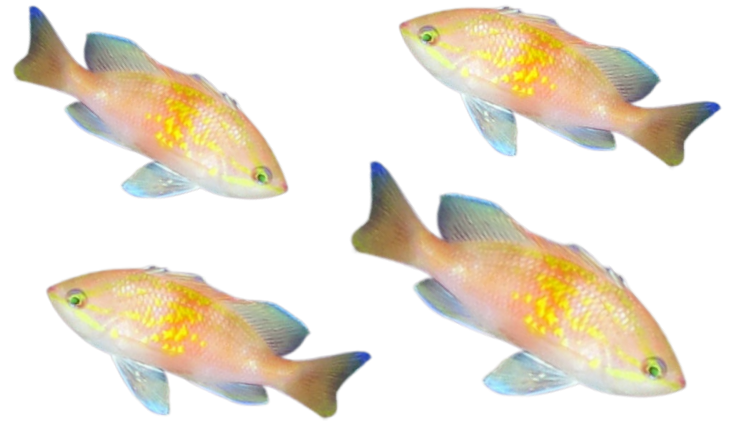
Spotted moray eel



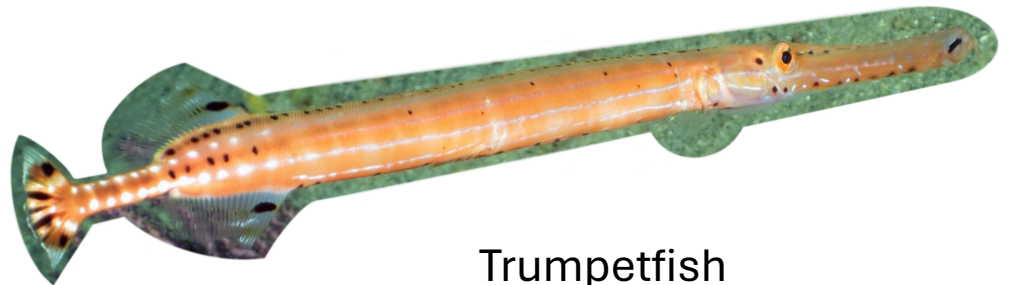
Swiftia exserta



Thesea nivea



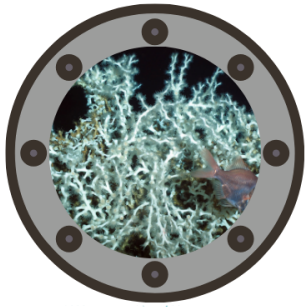
Roughtongue bass



Trumpetfish

Dusk Zone Assets

- Outline of assets:
 - Species ID guide
 - Populated mat
 - Unpopulated mat
 - Species page 1
 - Species page 2
 - Species page 3
 - Species page 4



Identify sea creatures of the Gulf

980 - 2,600 ft deep

DUSK ZONE!

Instructions: Use this field guide to look for the creatures below in the habitat image. When you have spotted it, write down how many you see in the circle to the right of the photo and name!

Fish

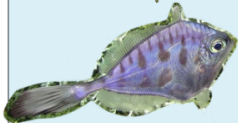
Crustacean

Coral

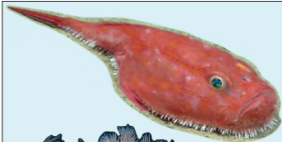
Other



Squat lobster



Thorny tinseltail



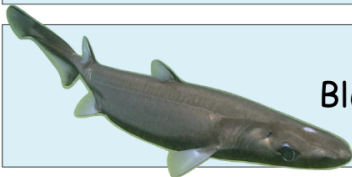
Sea toad



Callogorgia



Blackbelly
rosefish



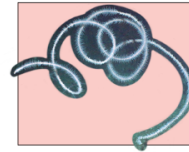
Black dogfish



Glass sponge



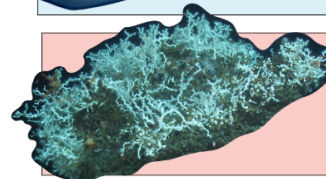
Armored searobin



Sea whip



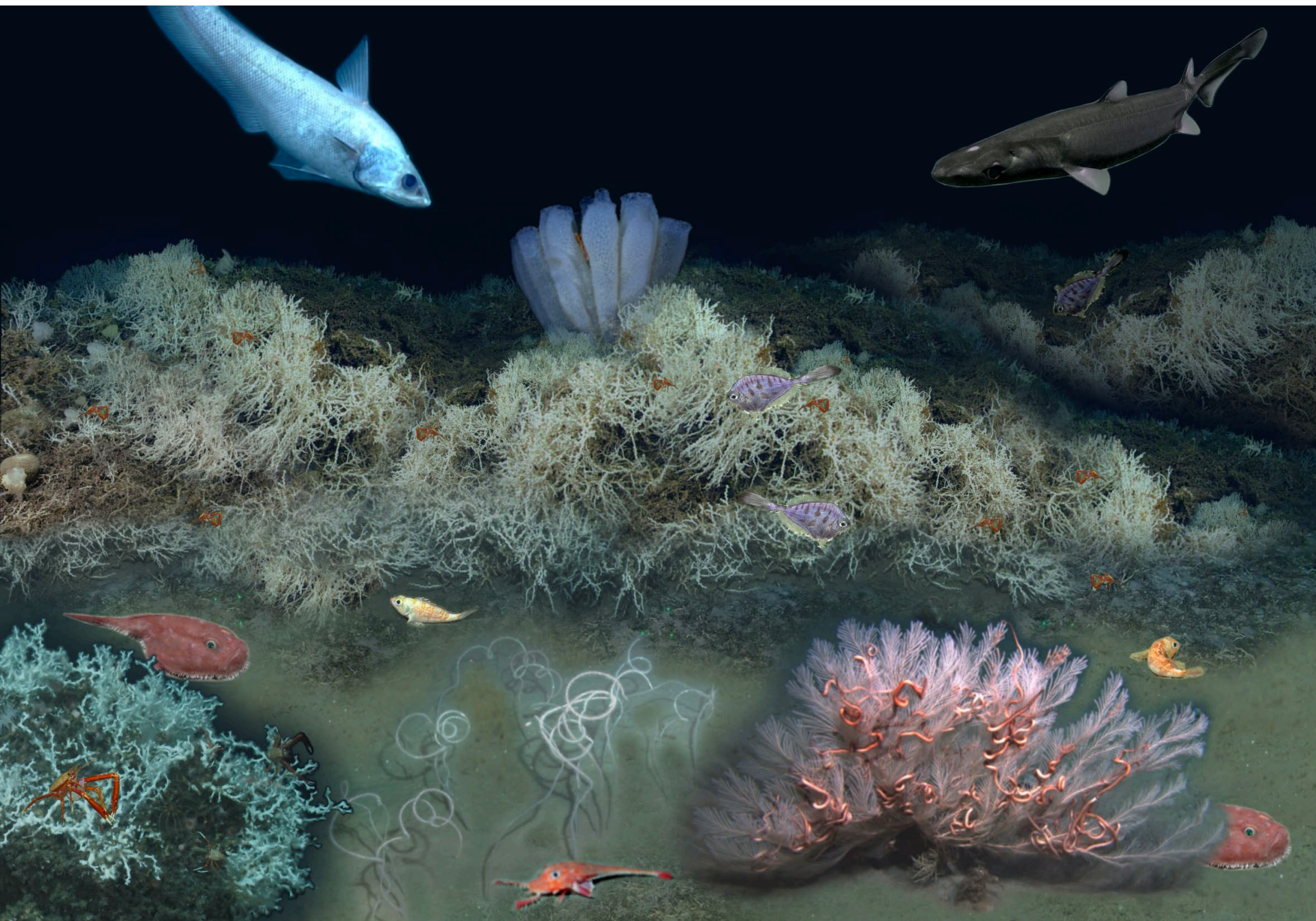
Atlantic grenadier

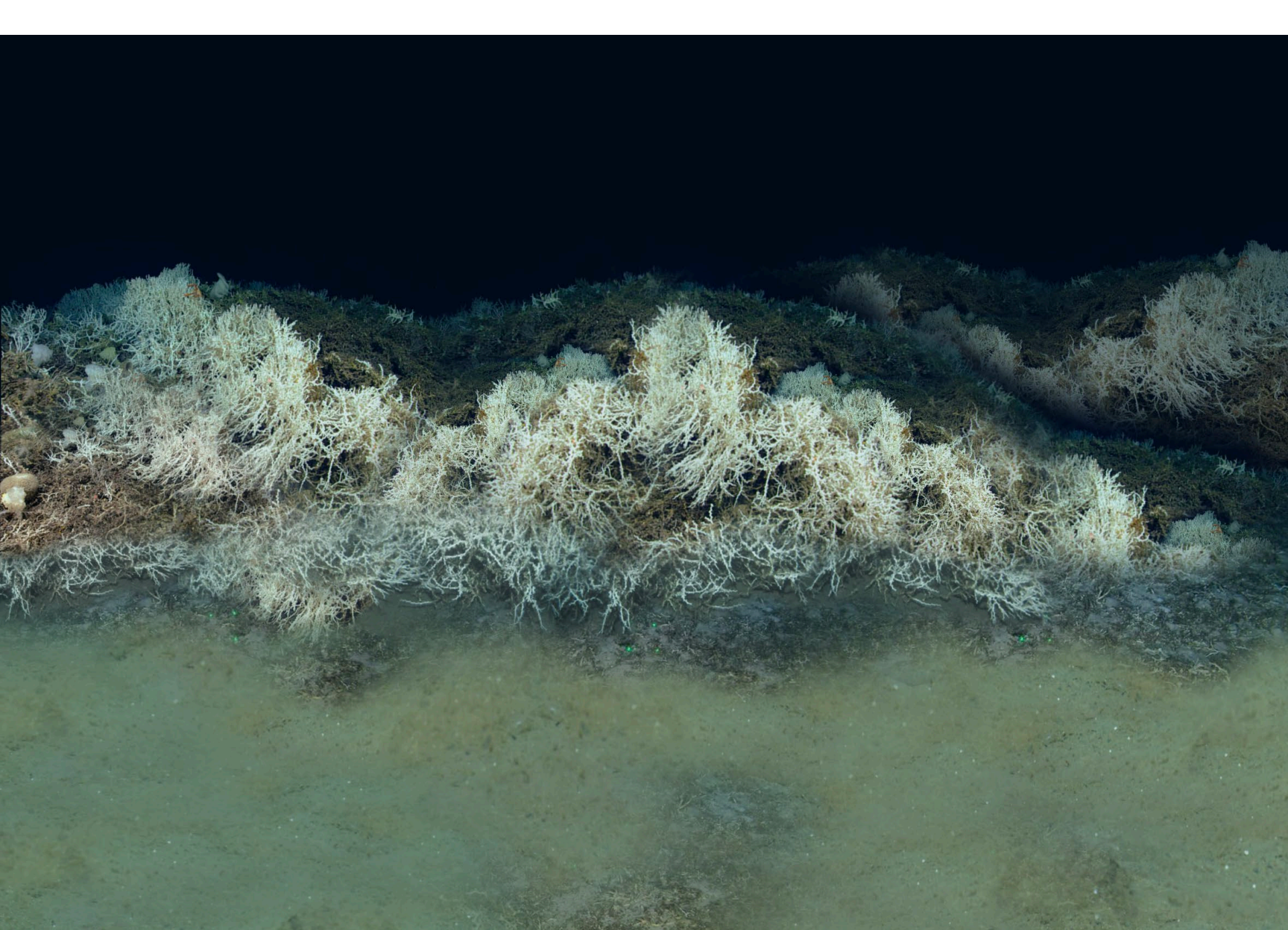


Desmophyllum
pertusum

This activity was made possible through a grant from the National Marine Sanctuary Foundation with funding to restore natural resources injured by the 2010 Deepwater Horizon (DWH) oil spill from the DWH Open Ocean Trustees

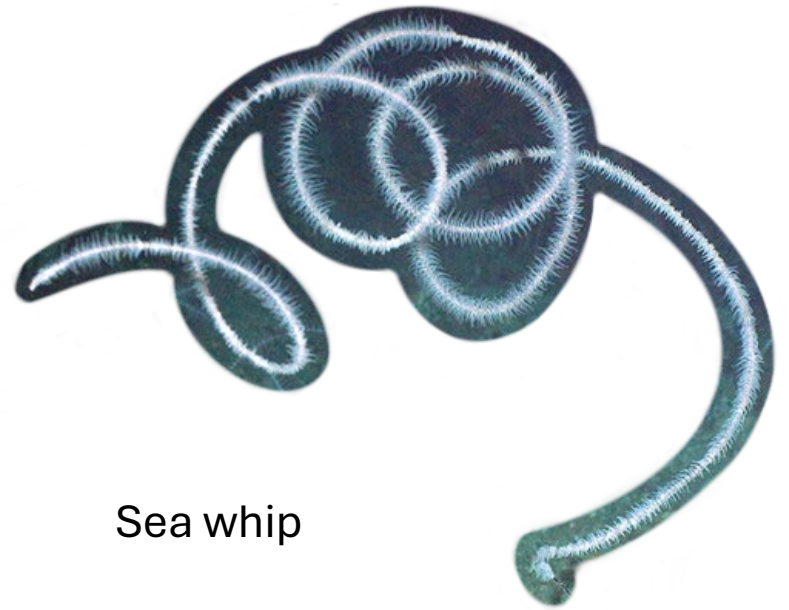




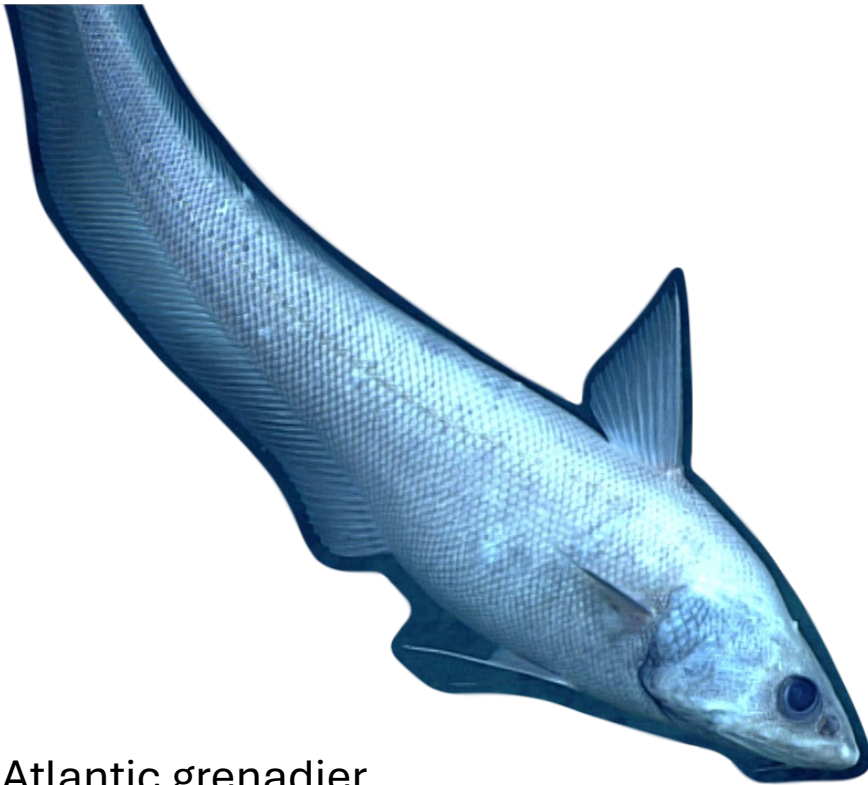




Armored searobin



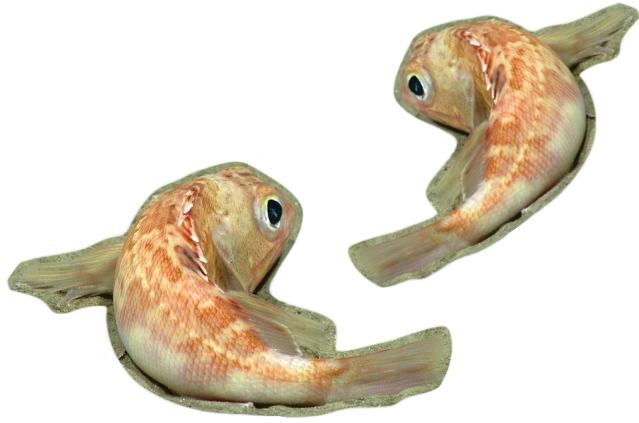
Sea whip



Atlantic grenadier



Callogorgia



Blackbelly rosefish



Callogorgia



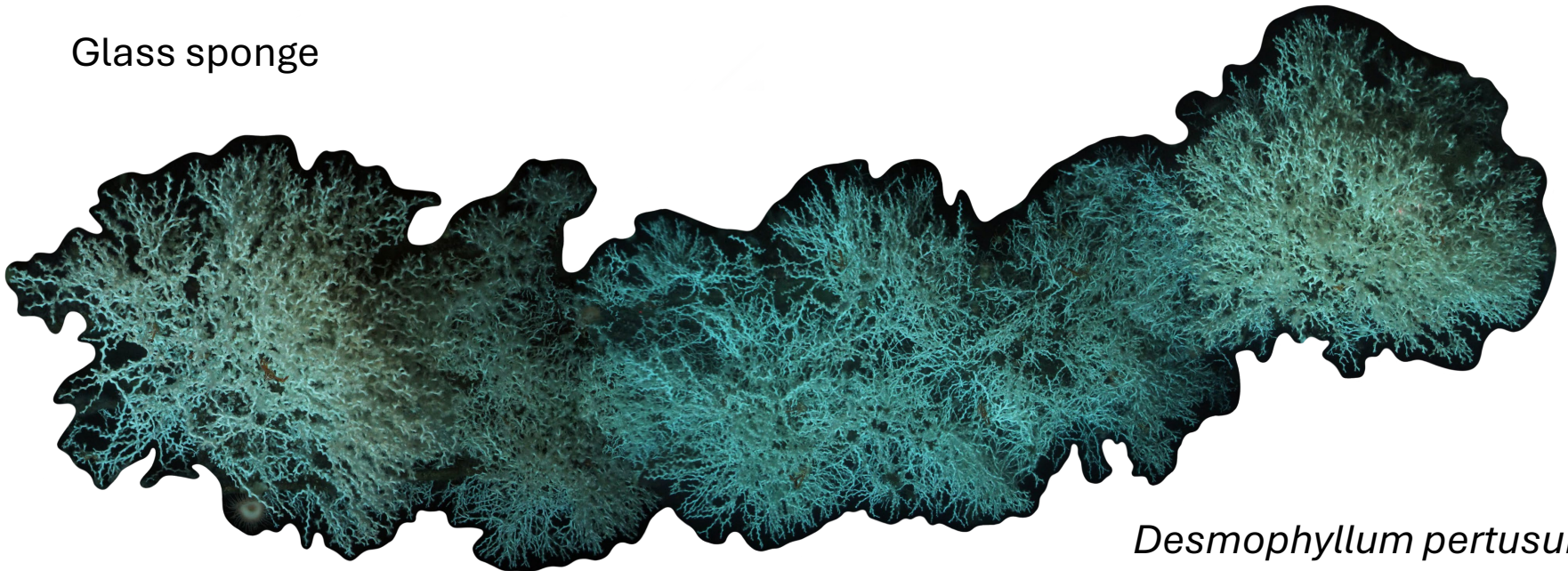
Black dogfish



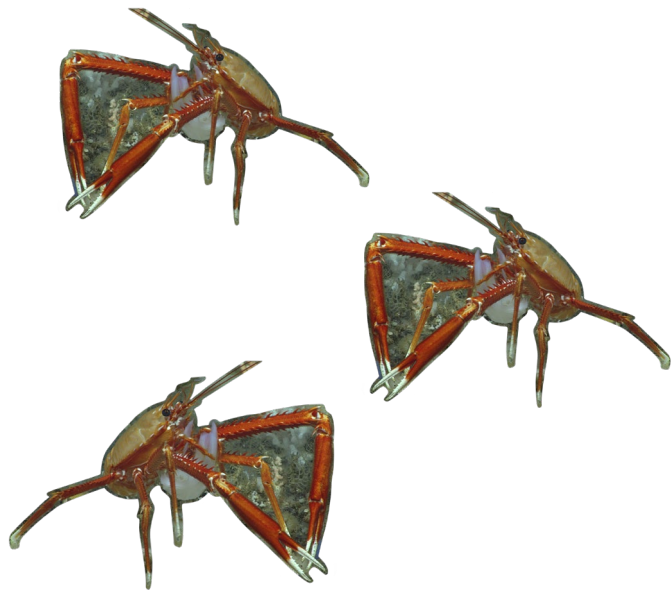
Glass sponge



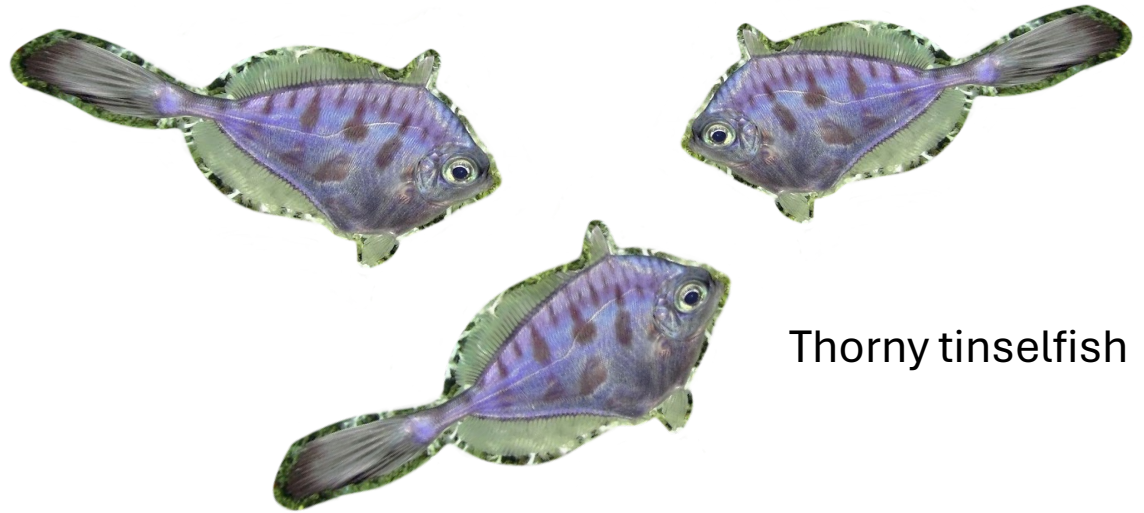
Sea toad



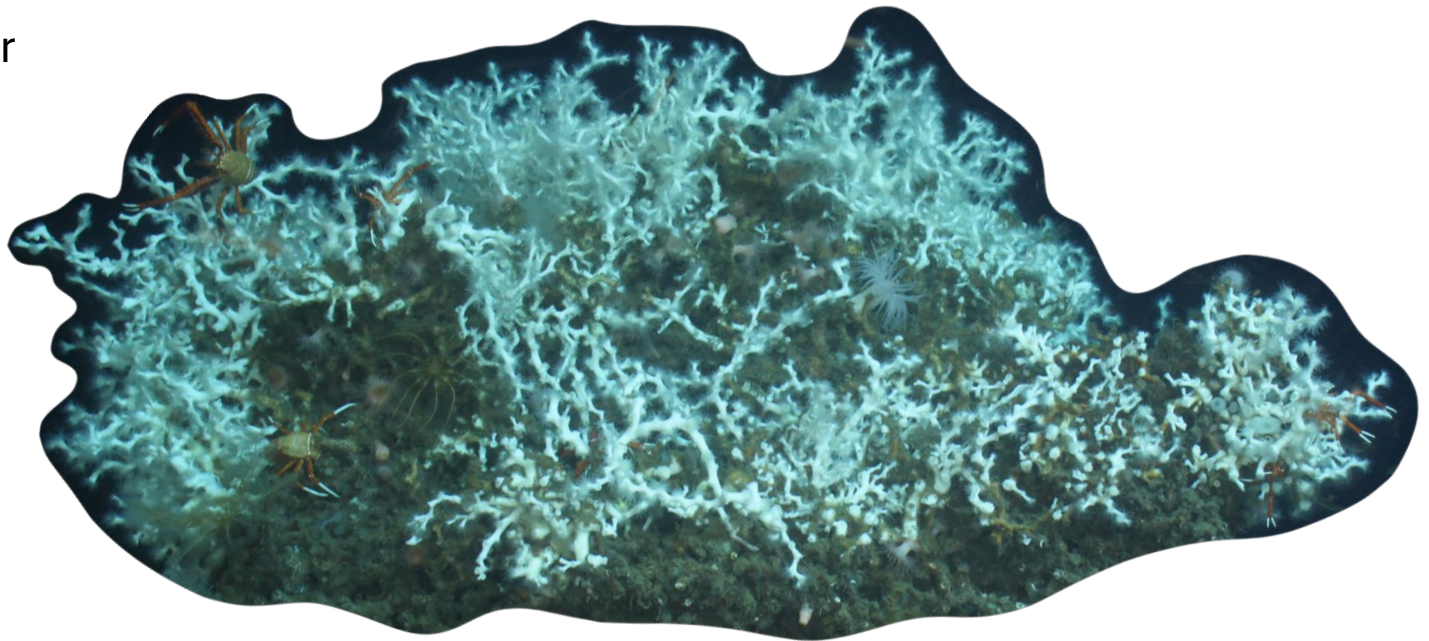
Desmophyllum pertusum



Squat lobster



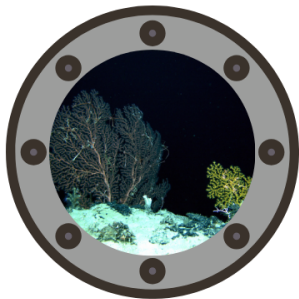
Thorny tinseltins



Desmophyllum pertusum

Midnight Zone Assets

- Outline of assets:
 - Species ID guide
 - Populated mat
 - Unpopulated mat
 - Species page 1
 - Species page 2
 - Species page 3
 - Species page 4
 - Species page 5



Identify sea creatures of the Gulf

2,600 ft and deeper

MIDNIGHT ZONE!

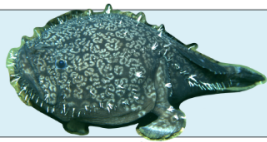
Instructions: Use this field guide to look for the creatures below in the habitat image. When you have spotted it, write down how many you see in the circle to the right of the photo and name!

Fish

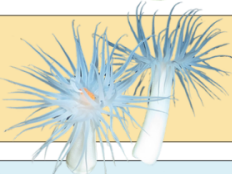
Crustacean

Coral

Other



Shaefer's
anglerfish



Deep-sea
anemone



Long-nosed
chimaera



Giant isopod



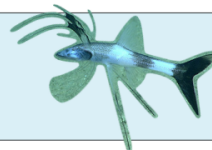
Dumbo octopus



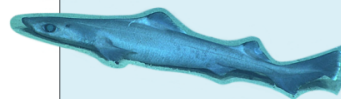
Brisingid
sea star



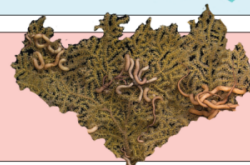
Bubblegum
coral



Tripod fish



Gulper shark



Paramuricea
biscaya



Deep-sea
red crab



Cusk eel



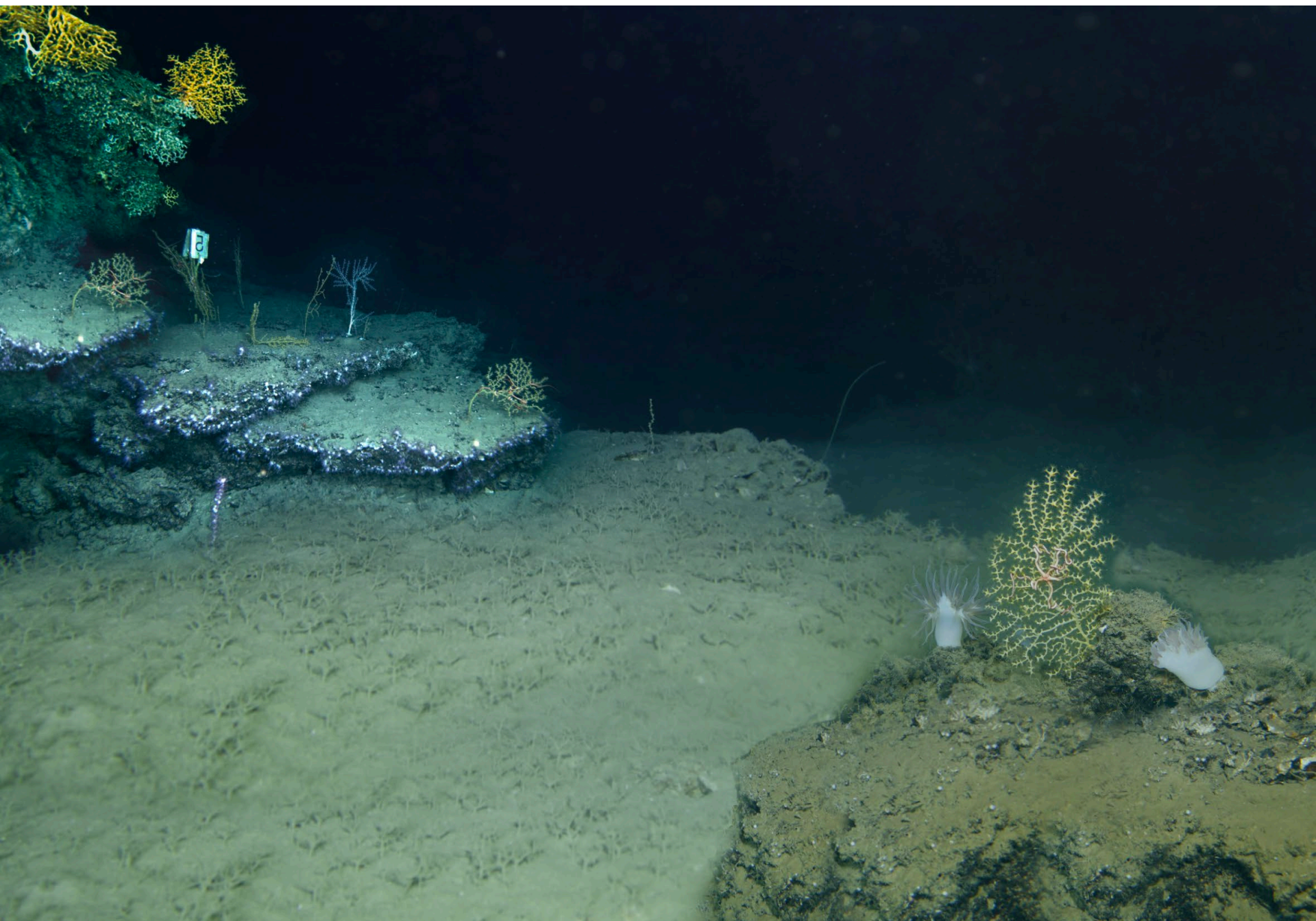
Sea lily

This activity was made possible through a grant from the National Marine Sanctuary Foundation with funding to restore natural resources injured by the 2010 Deepwater Horizon (DWH) oil spill from the DWH Open Ocean Trustees



National
Marine Sanctuary
Foundation







Cusk eel

Paramuricea biscaya



Brisingid sea star

Bubblegum coral

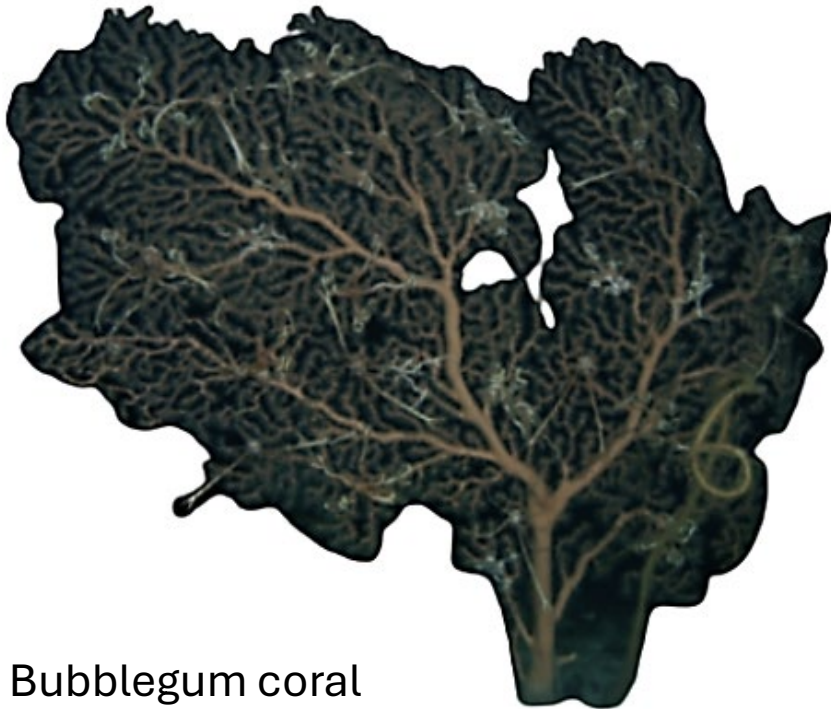




Deep-sea
red crab

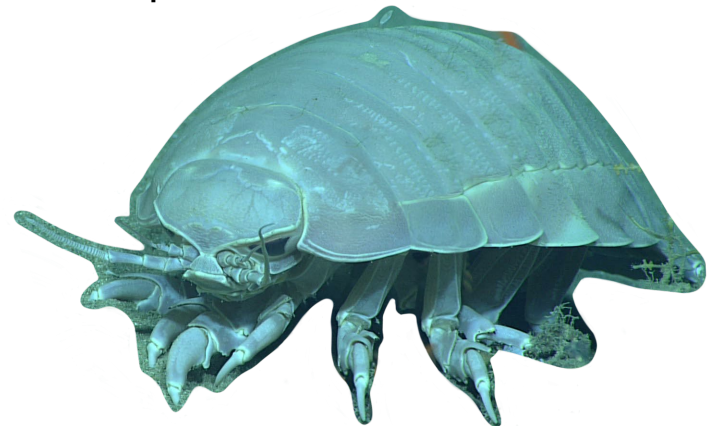


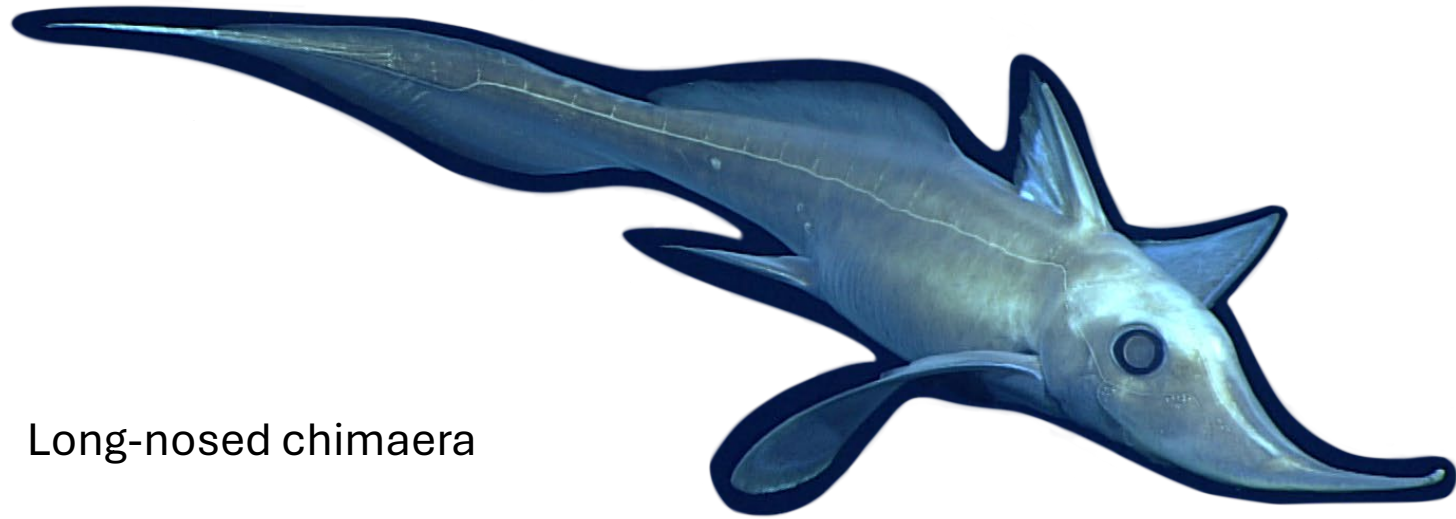
Dumbo octopus



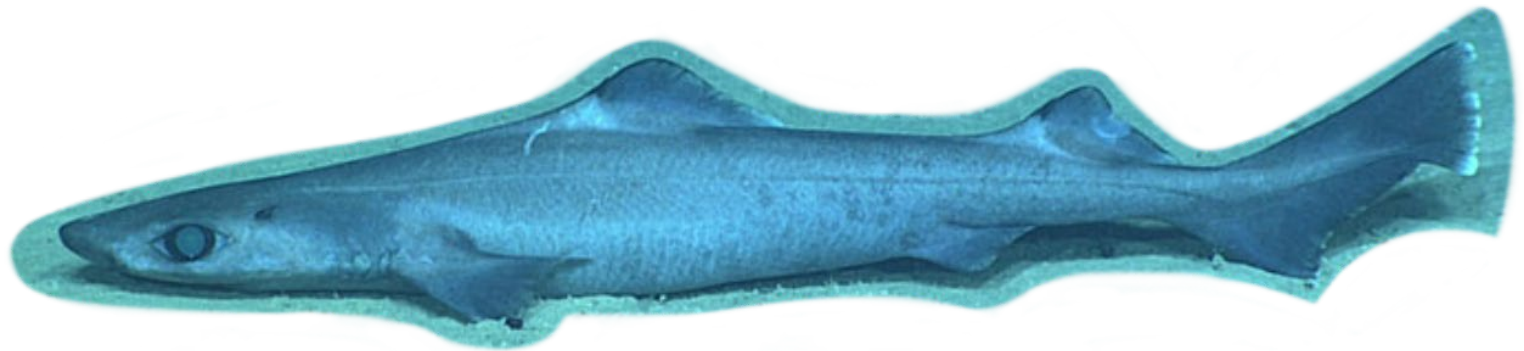
Bubblegum coral

Giant isopod

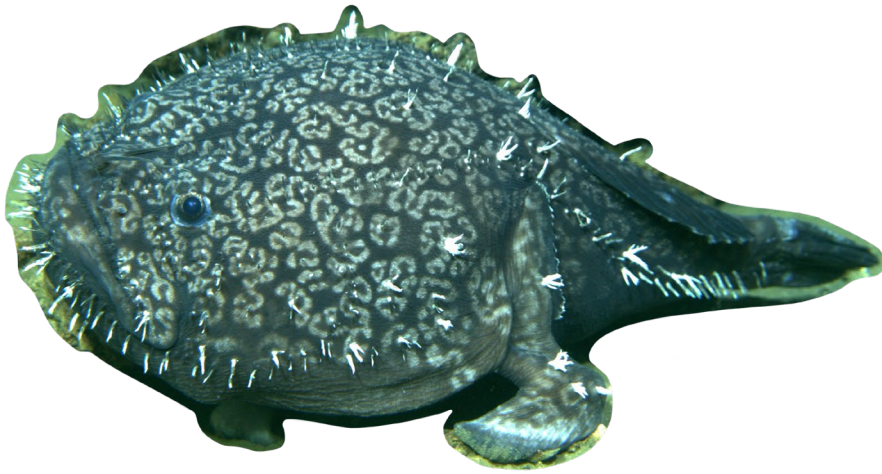




Long-nosed chimaera



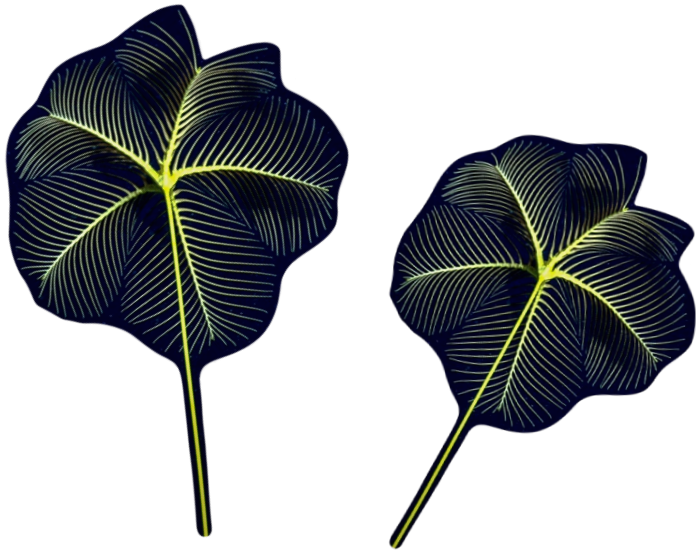
Gulper shark



Shaefer's anglerfish



Deep-sea anemone



Sea lily



Tripod fish