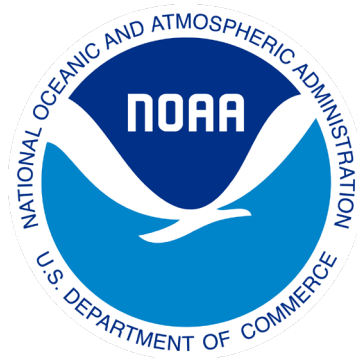
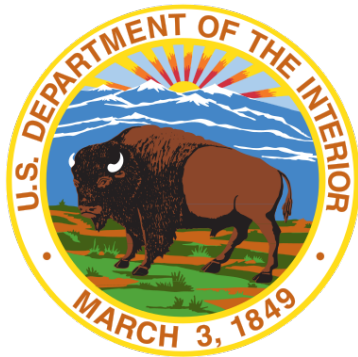


Deep Gulf Habitat Mats

This activity takes ocean lovers on a scavenger hunt for animals who reside in the twilight, dusk, and midnight zones.

Credit: NOAA, Marine Applied Research & Exploration

This activity was made possible through a grant from the National Marine Sanctuary Foundation with funding to restore natural resources injured by the 2010 *Deepwater Horizon (DWH)* oil spill from the DWH Open Ocean Trustees



**National
Marine Sanctuary
Foundation**

Habitat Mats: Outline

- In this document, you will find assets for each of the three zones (twilight, dusk, and midnight)
- Under each zone, you will find:
 - Species ID guides
 - Populated mats
 - Unpopulated mats
 - Species pages

Habitat Mats: User Guide

- Populated mats: Use the species ID guides for the twilight, dusk, and midnight zones to find creatures in each habitat. When you find it, check off the animal on the ID guide! For an added challenge, include the number of each species you found.
- Unpopulated mats: Print and cut out each of the species from the species pages. Then mix them up in a pile and use the species ID guides to place them in the correct zone mat!
- *To print large versions of mats, use banner files found here or email sasha.francis@noaa.gov: <https://drive.google.com/drive/folders/12fuTBO3Htw7hFrV147N2eMfSJbR9tXWI>*

Twilight Zone Assets

- Outline of assets:
 - Species ID guide
 - Populated mat
 - Unpopulated mat
 - Species page 1
 - Species page 2
 - Species page 3
 - Species page 4
 - Species page 5
 - Species page 6



Identify creatures of the deep Gulf

160 - 980 ft deep

TWILIGHT ZONE!

Instructions: Use this field guide to look for the creatures below in the habitat image. When you have spotted it, write down how many you see in the circle to the right of the photo and name!

Fish

Crustacean

Coral

Other



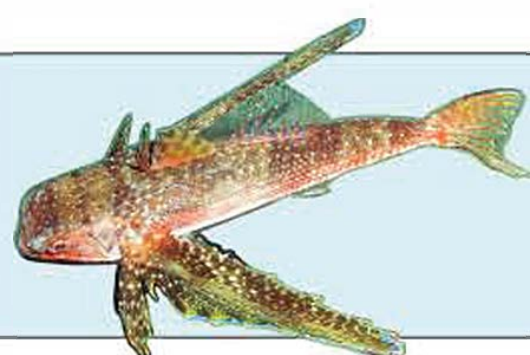
Slipper
lobster



Thesea
nivea



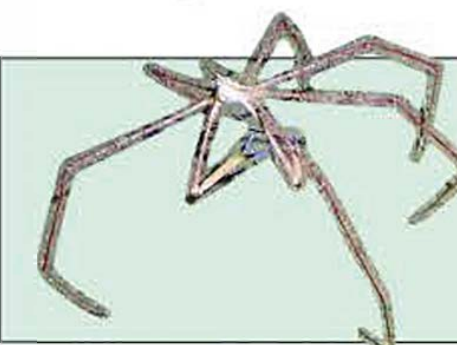
Hunchback
scorpionfish



Flying
gurnard



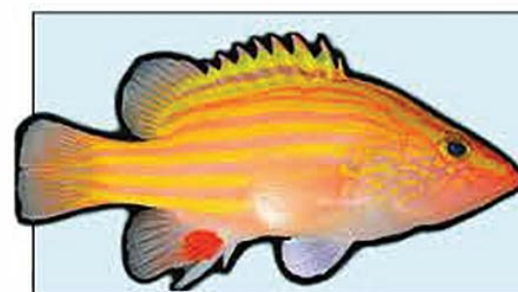
Red snapper



Arrow crab



Short bigeye



Spanish flag



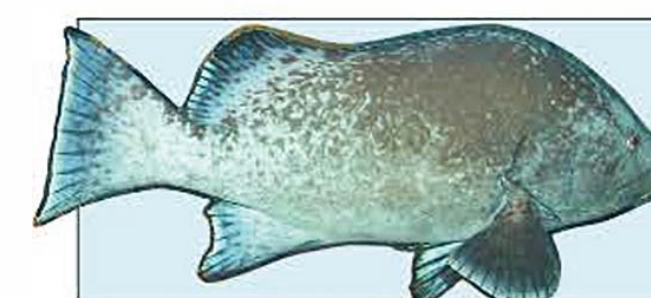
Swiftia
exserta



Muricea
pendula



Trumpetfish



Marbled
grouper



Sharpnose
puffer



Reef
butterflyfish



Rough tongue
bass



Spotted
moray eel

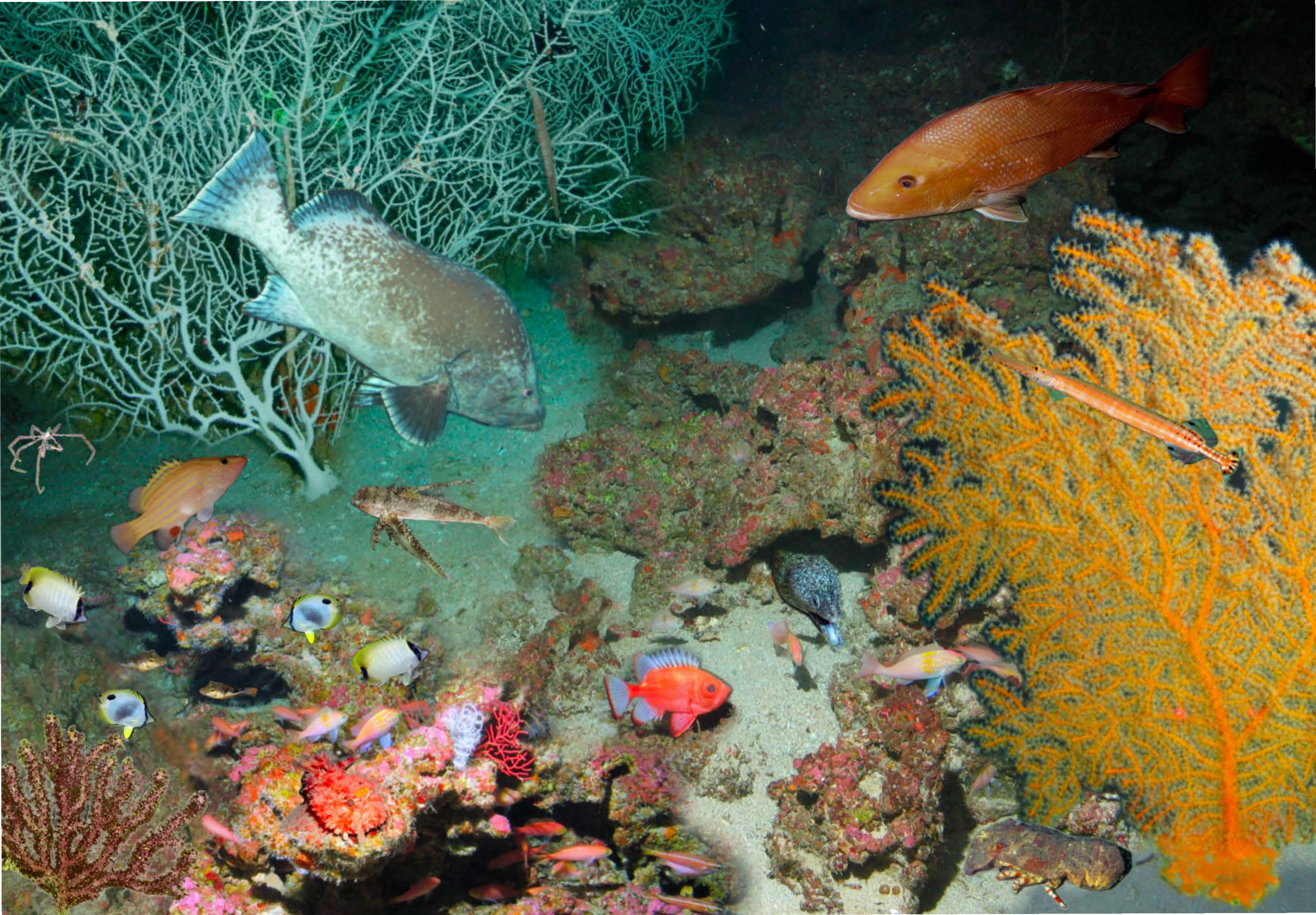


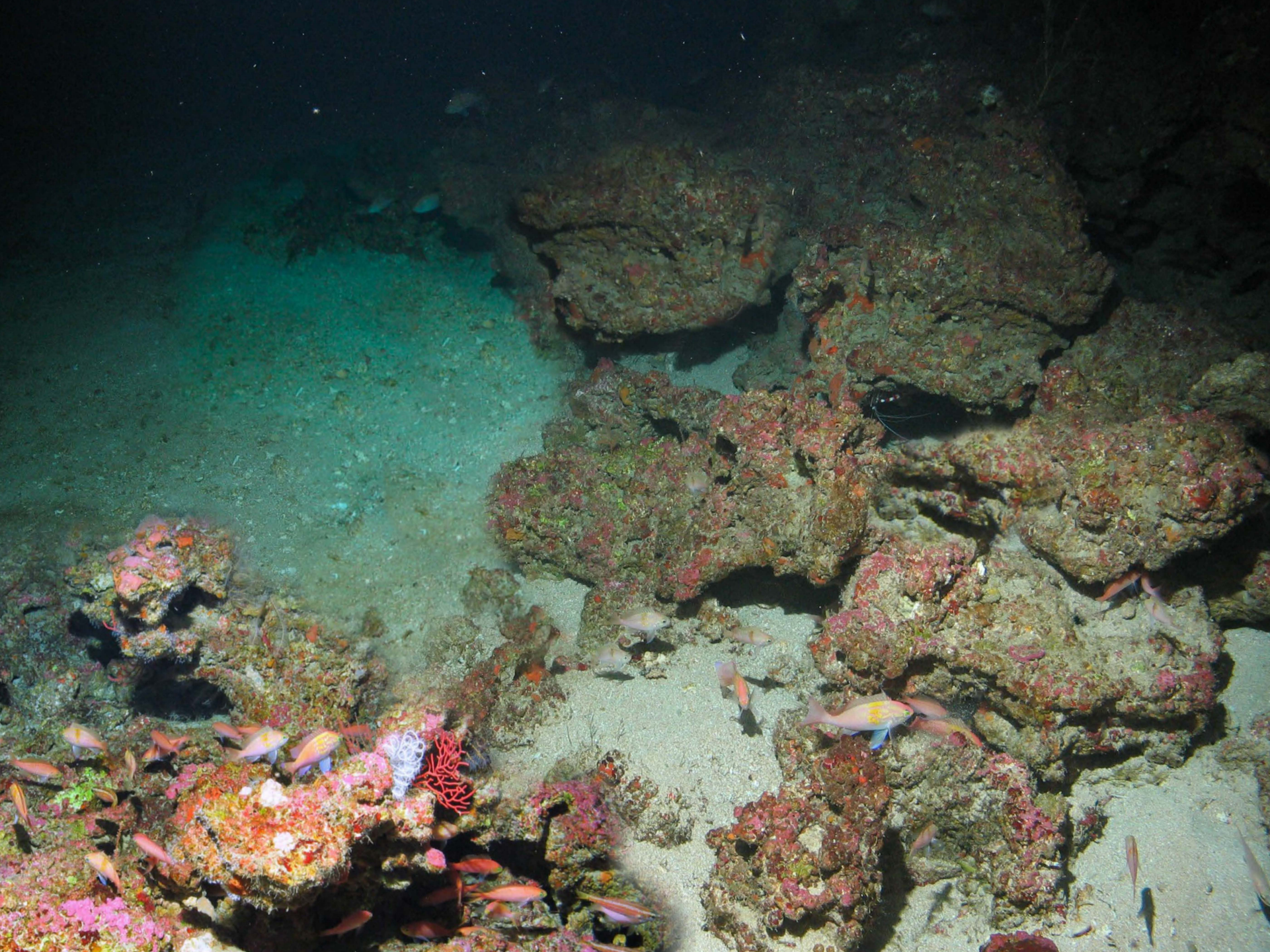
Spotfin
butterflyfish

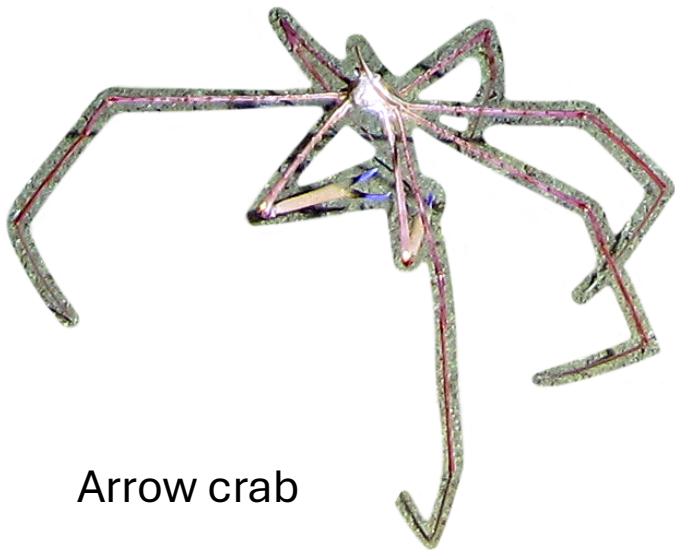
This activity was made possible through a grant from the National Marine Sanctuary Foundation with funding to restore natural resources injured by the 2010 Deepwater Horizon (DWH) oil spill from the DWH Open Ocean Trustees



National
Marine Sanctuary
Foundation







Arrow crab



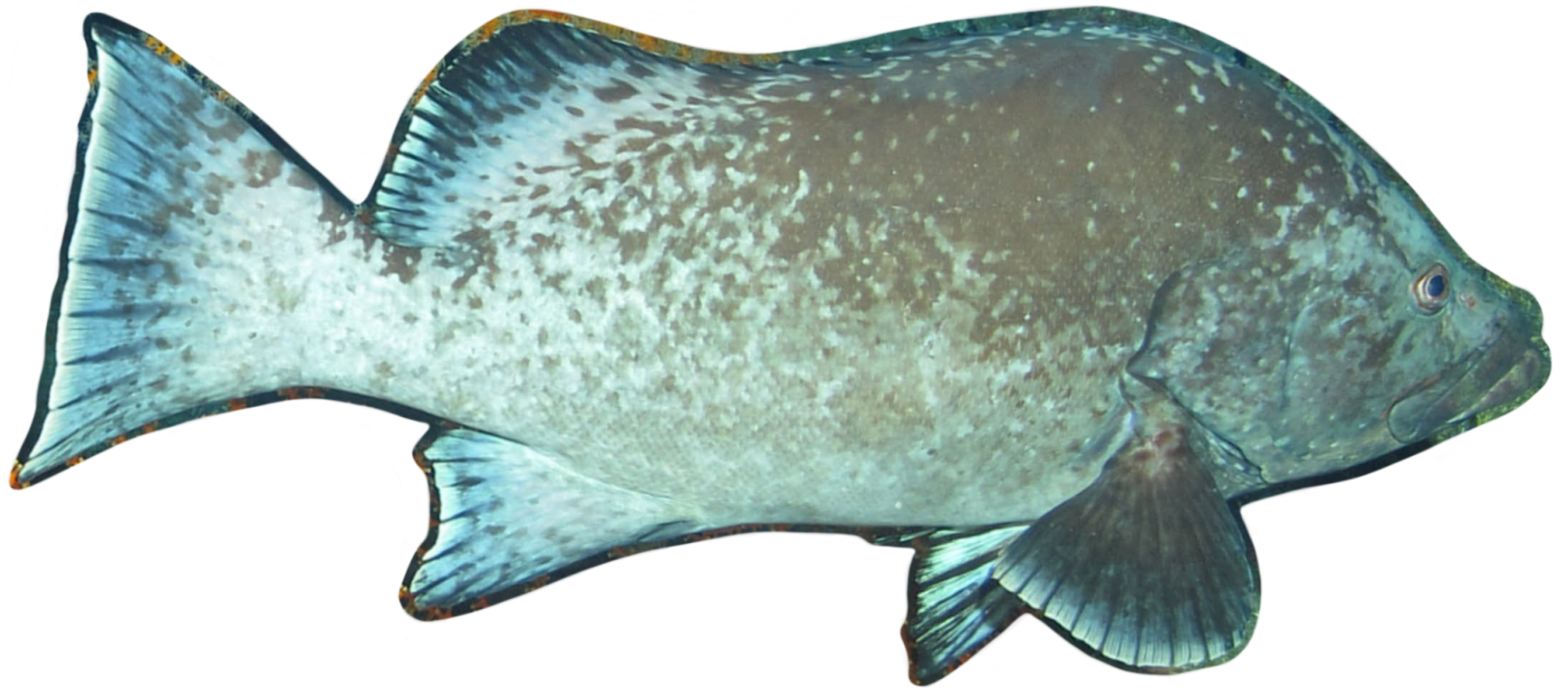
Short bigeye



Flying gurnard



Hunchback scorpionfish



Marbled grouper

Red snapper



Reef butterflyfish



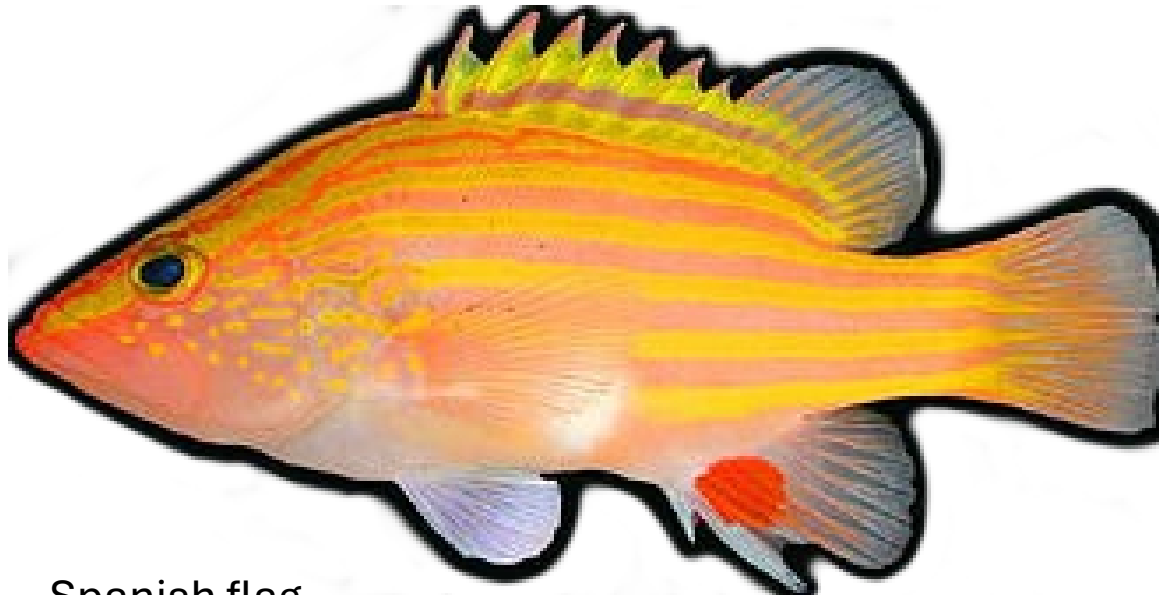
Muricea pendula



Slipper lobster



Sharpnose puffer



Spanish flag



Spotfin butterflyfish



Spotted
moray eel



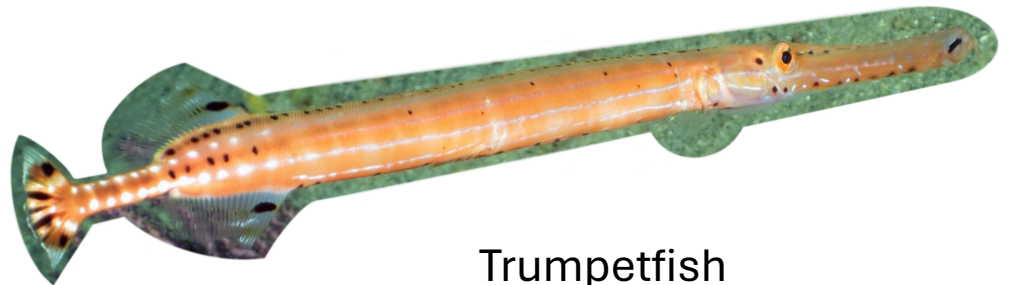
Swiftia exserta



Thesea nivea



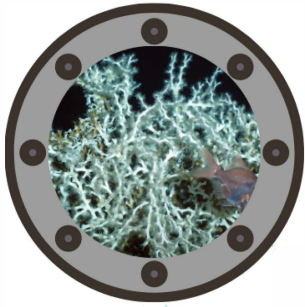
Rough-tongue bass



Trumpetfish

Dusk Zone Assets

- Outline of assets:
 - Species ID guide
 - Populated mat
 - Unpopulated mat
 - Species page 1
 - Species page 2
 - Species page 3
 - Species page 4



Identify creatures of the deep Gulf

980 - 2,600 ft deep

DUSK ZONE!

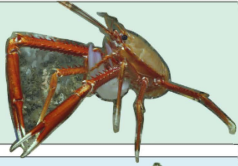
Instructions: Use this field guide to look for the creatures below in the habitat image. When you have spotted it, write down how many you see in the circle to the right of the photo and name!

Fish

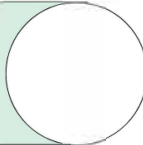
Crustacean

Coral

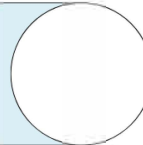
Other



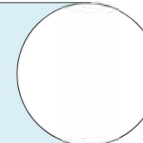
Squat lobster



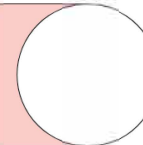
Thorny tinselfish



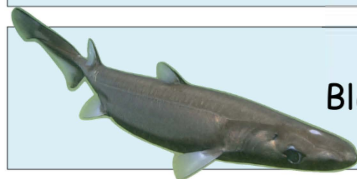
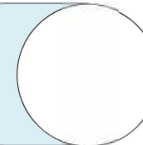
Sea toad



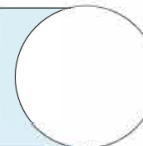
Callogorgia



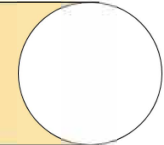
Blackbelly
rosefish



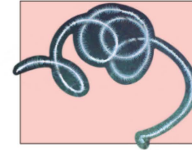
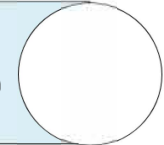
Black dogfish



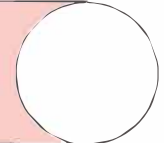
Glass sponge



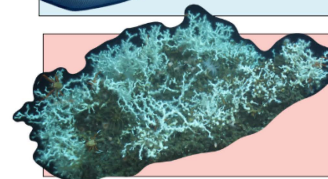
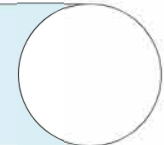
Armored searobin



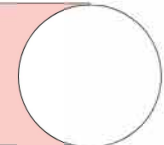
Sea whip



Atlantic grenadier



Desmophyllum
pertusum

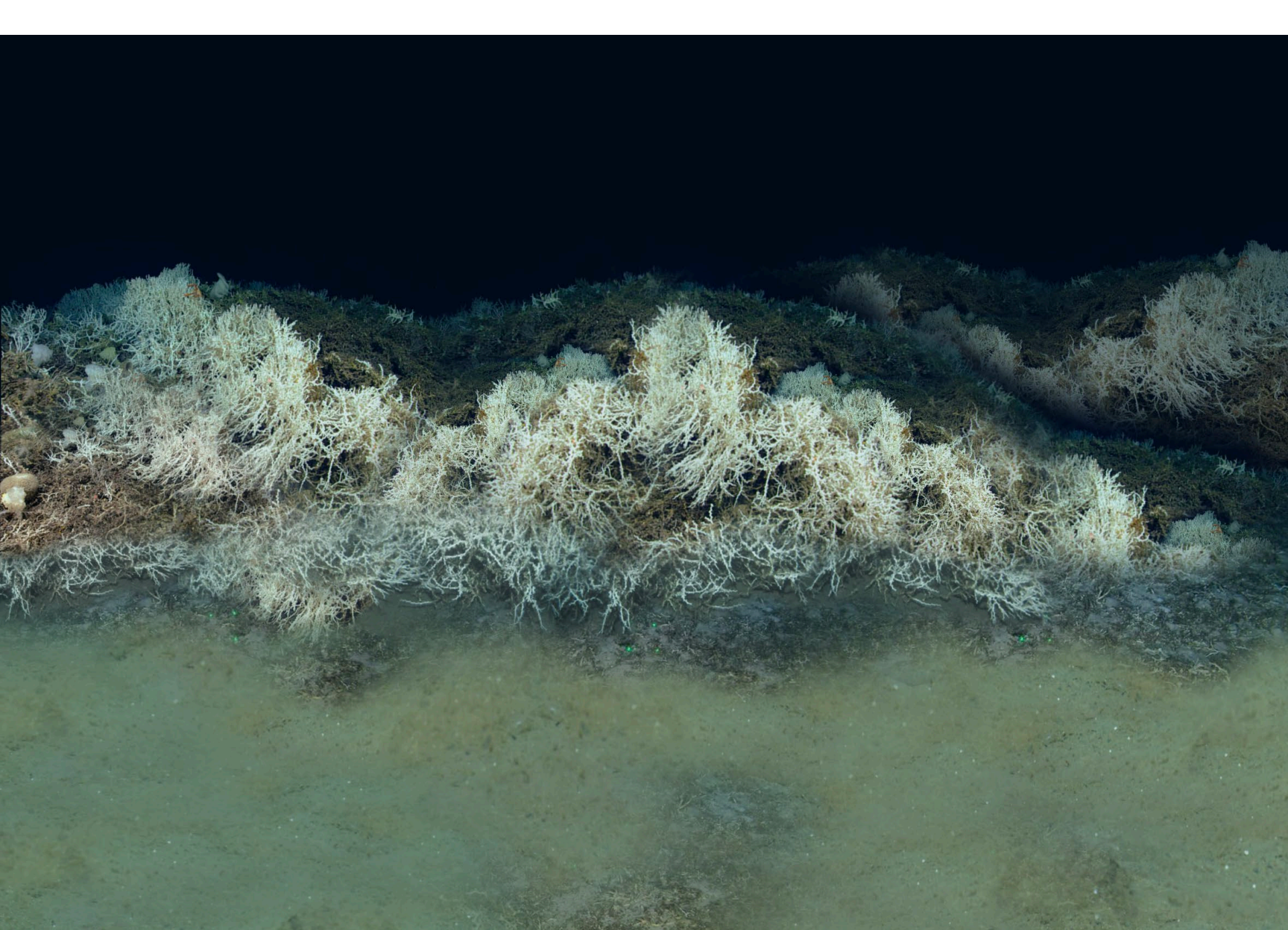


This activity was made possible through a grant from the National Marine Sanctuary Foundation with funding to restore natural resources injured by the 2010 Deepwater Horizon (DWH) oil spill from the DWH Open Ocean Trustees

 National
Marine Sanctuary
Foundation

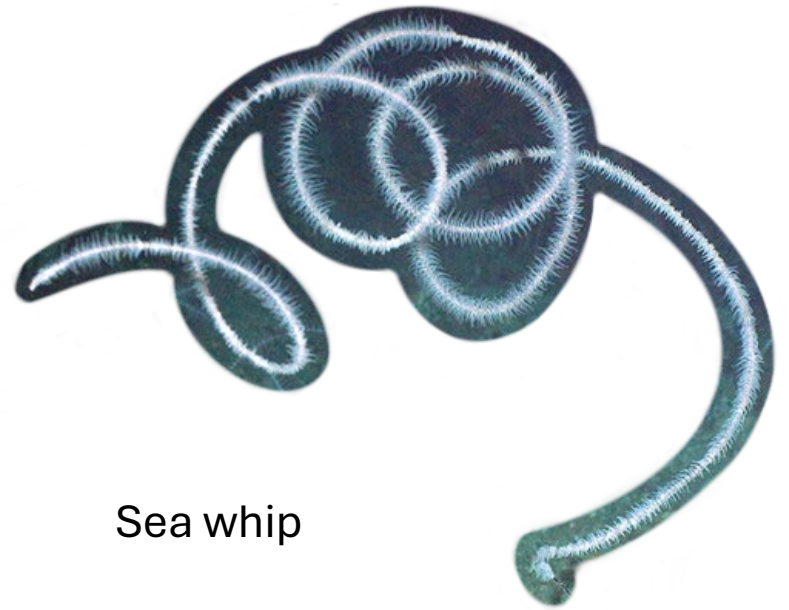




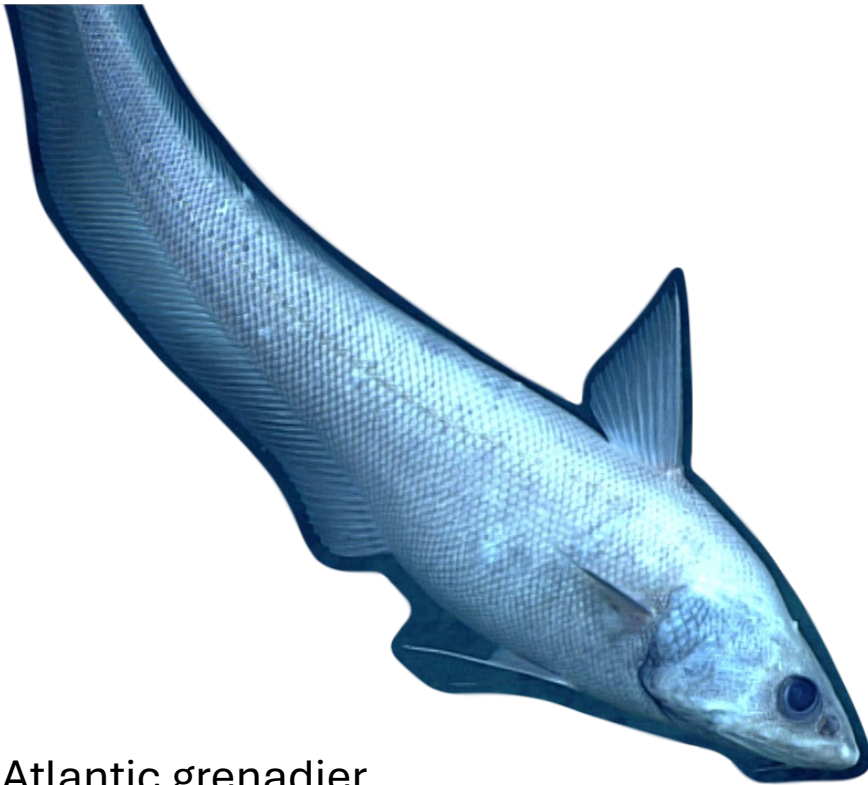




Armored searobin



Sea whip



Atlantic grenadier



Callogorgia



Blackbelly rosefish



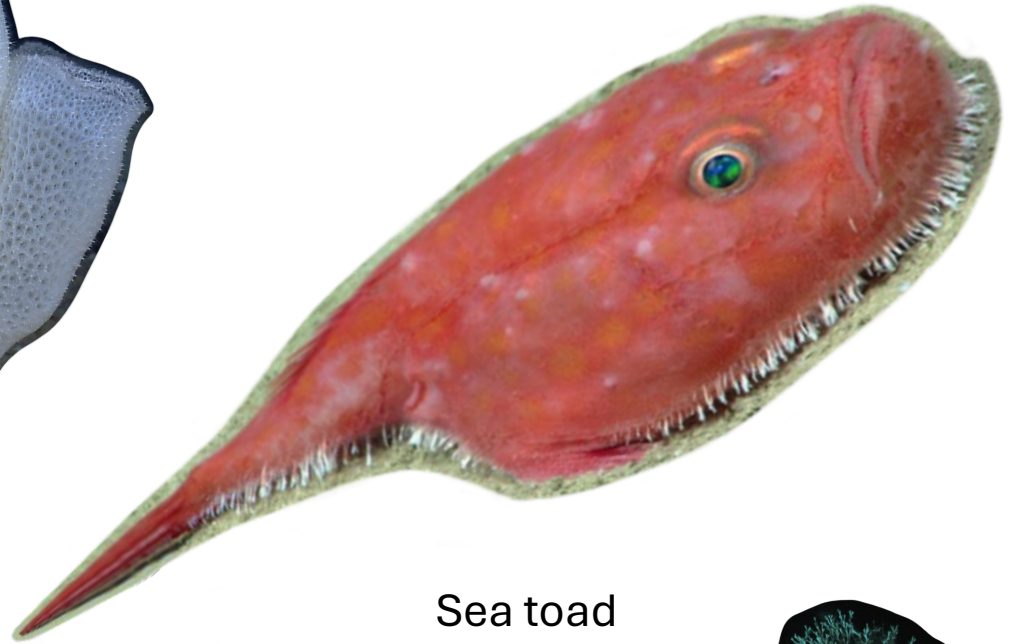
Callogorgia



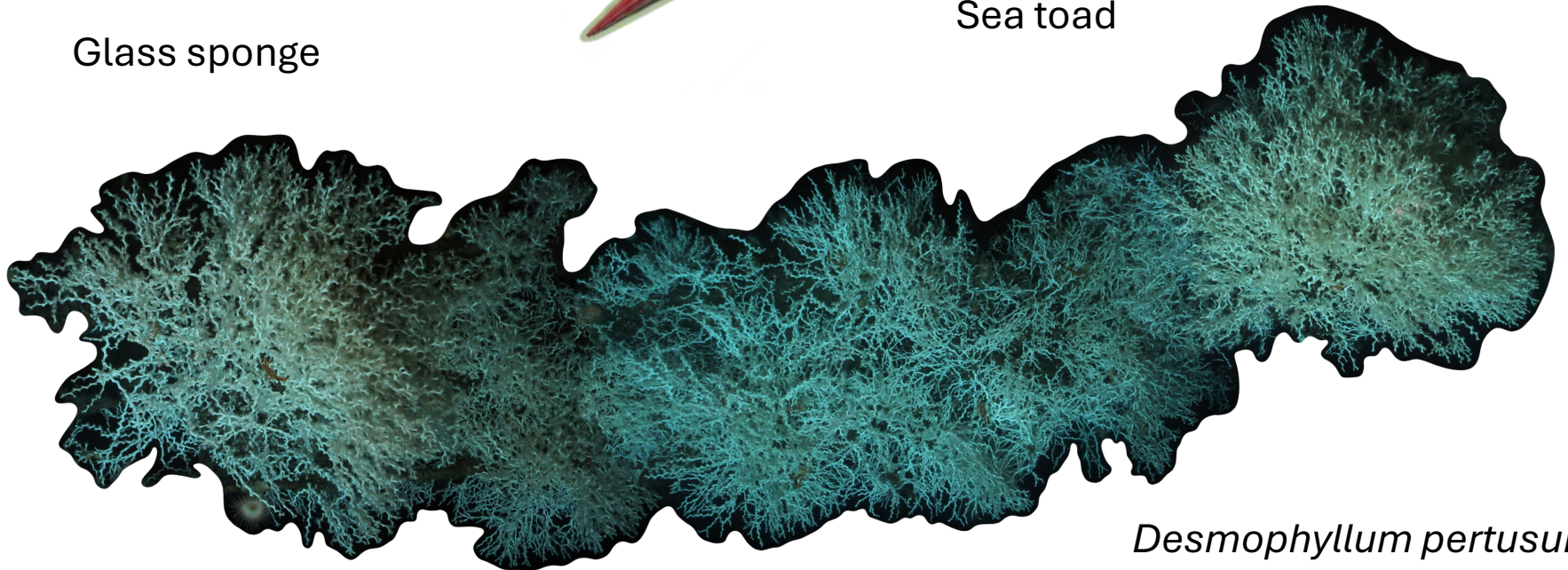
Black dogfish



Glass sponge



Sea toad



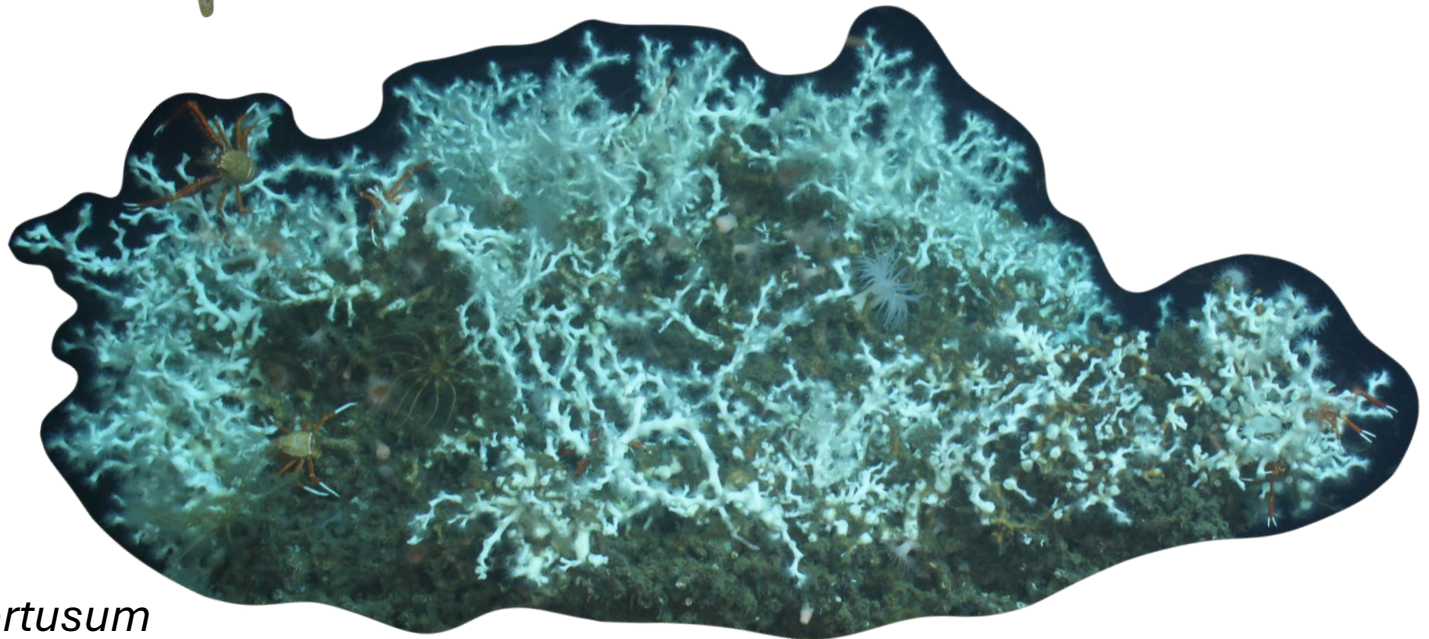
Desmophyllum pertusum



Squat lobster



Thorny tinseltail



Desmophyllum pertusum

Midnight Zone Assets

- Outline of assets:
 - Species ID guide
 - Populated mat
 - Unpopulated mat
 - Species page 1
 - Species page 2
 - Species page 3
 - Species page 4



Identify creatures of the deep Gulf

2,600 ft and deeper

MIDNIGHT ZONE!

Instructions: Use this field guide to look for the creatures below in the habitat image. When you have spotted it, write down how many you see in the circle to the right of the photo and name!

Fish

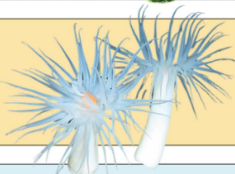
Crustacean

Coral

Other



Schaefer's
anglerfish



Deep-sea
anemone



Long-nosed
chimaera



Giant isopod



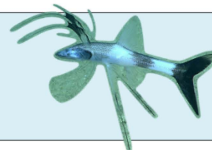
Dumbo octopus



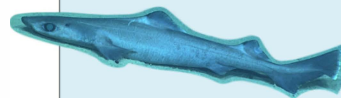
Brisingid
sea star



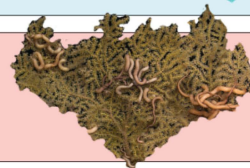
Bubblegum
coral



Tripod fish



Gulper shark



Paramuricea
biscaya



Deep-sea
red crab



Cusk eel



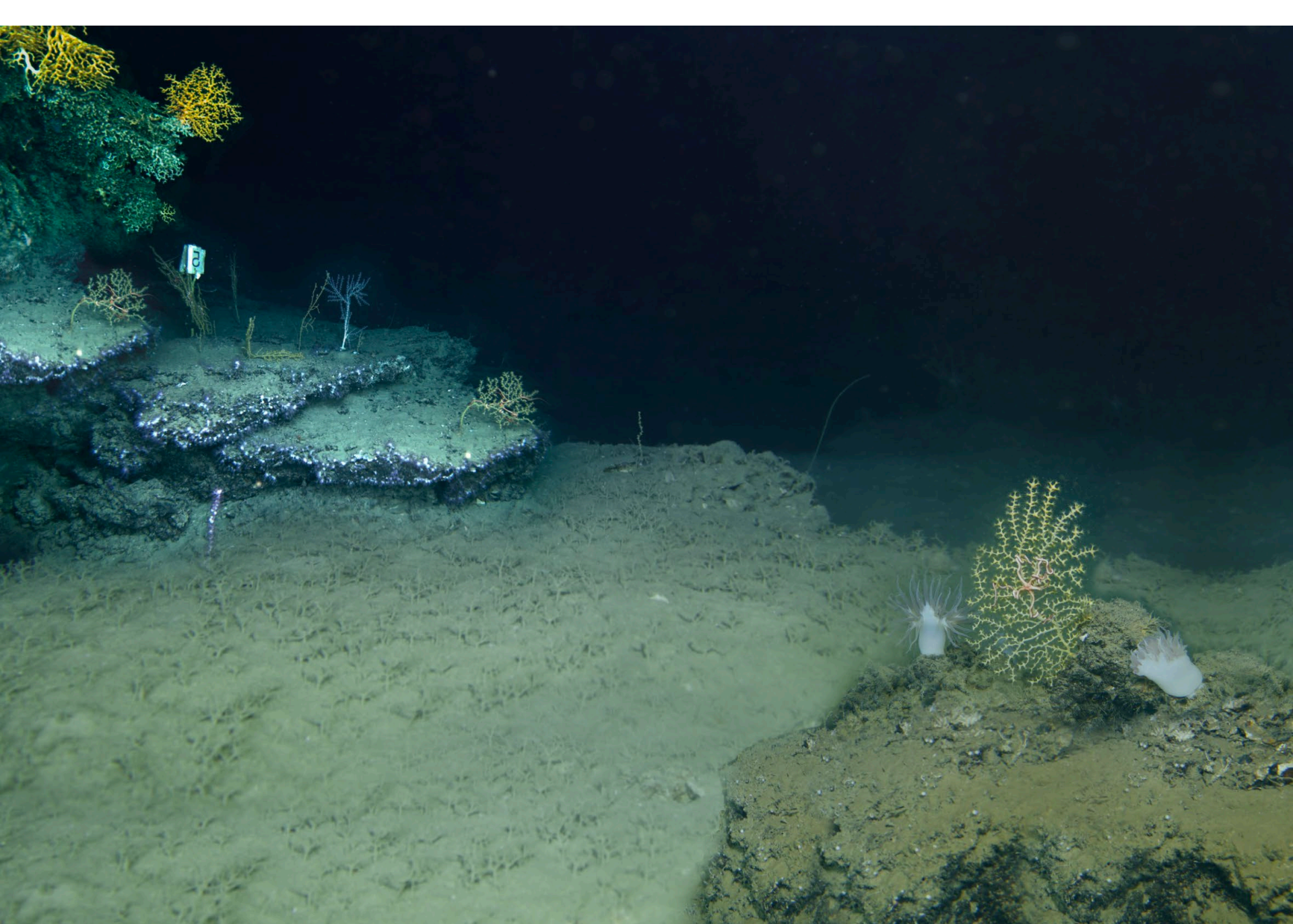
Sea lily

This activity was made possible through a grant from the National Marine Sanctuary Foundation with funding to restore natural resources injured by the 2010 Deepwater Horizon (DWH) oil spill from the DWH Open Ocean Trustees



National
Marine Sanctuary
Foundation







Cusk eel



Brisingid sea star



Paramuricea biscaya



Deep-sea
red crab



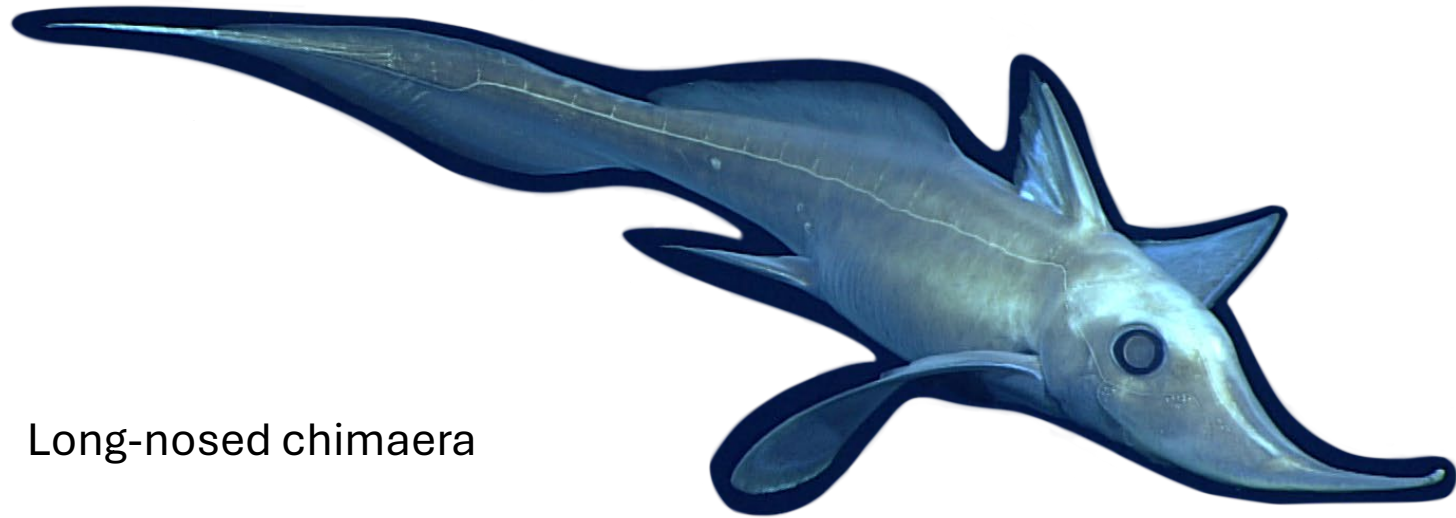
Giant isopod



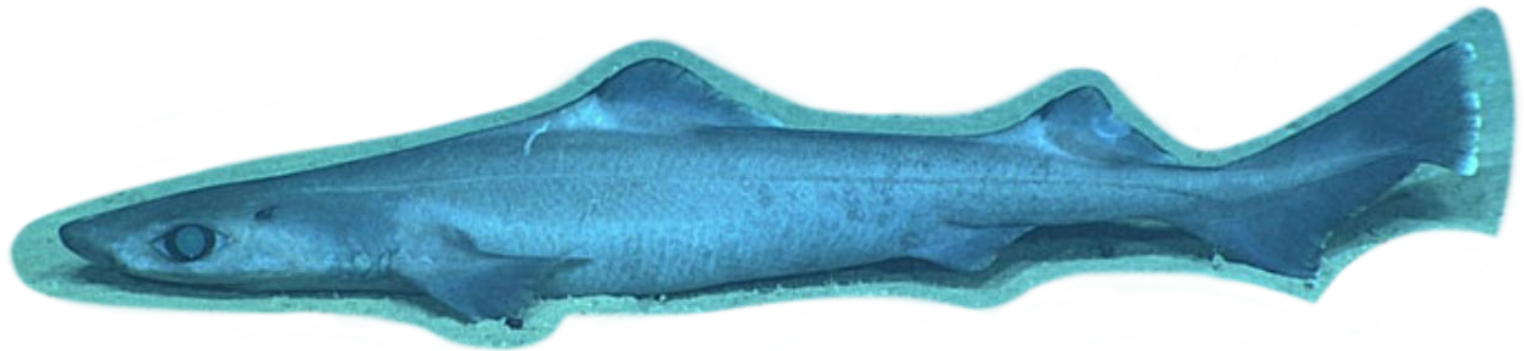
Bubblegum coral



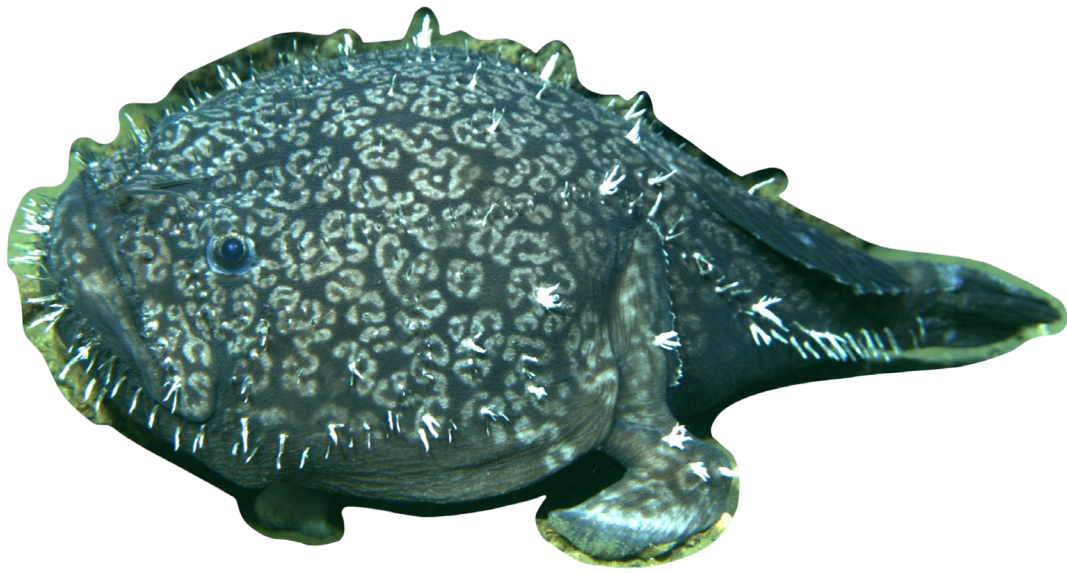
Dumbo octopus



Long-nosed chimaera



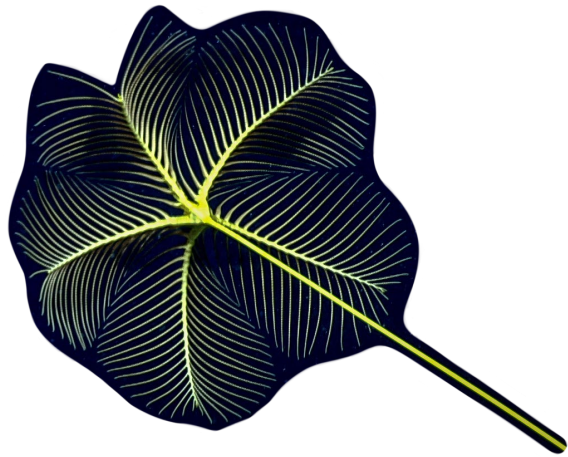
Gulper shark



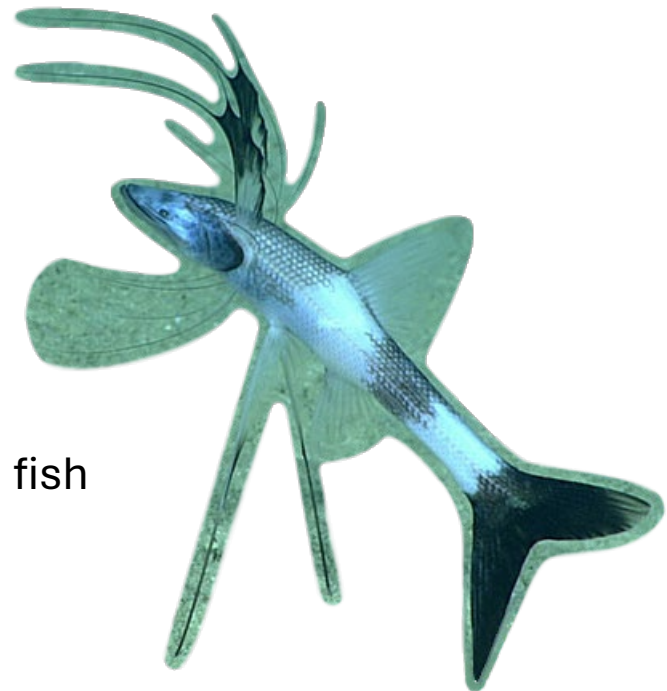
Schaefer's anglerfish



Deep-sea anemone



Sea lily



Tripod fish