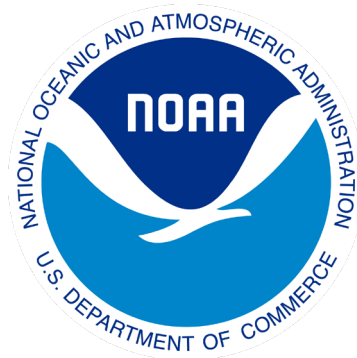


Deep Gulf Habitat Mats

This activity takes ocean lovers on a scavenger hunt for animals who reside in the twilight, dusk, and midnight zones.

Credit: NOAA, Marine Applied Research & Exploration

This activity was made possible through a grant from the National Marine Sanctuary Foundation with funding to restore natural resources injured by the 2010 *Deepwater Horizon (DWH)* oil spill from the DWH Open Ocean Trustees



**National
Marine Sanctuary
Foundation**

Habitat Mats: Outline

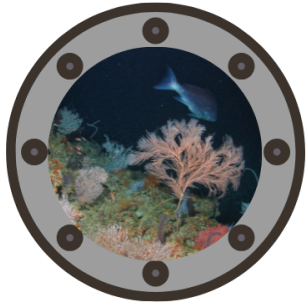
- In this document, you will find assets for each of the three zones (twilight, dusk, and midnight)
- Under each zone, you will find:
 - Species ID guides
 - Populated mats
 - Unpopulated mats
 - Species pages

Habitat Mats: User Guide

- Populated mats: Use the species ID guides for the twilight, dusk, and midnight zones to find creatures in each habitat. When you find it, check off the animal on the ID guide! For an added challenge, include the number of each species you found.
- Unpopulated mats: Print and cut out each of the species from the species pages. Then mix them up in a pile and use the species ID guides to place them in the correct zone mat!

Twilight Zone Assets

- Outline of assets:
 - Species ID guide
 - Populated mat
 - Unpopulated mat
 - Species page 1
 - Species page 2
 - Species page 3
 - Species page 4
 - Species page 5
 - Species page 6



Identify creatures of the Gulf of Mexico

160 - 980 ft deep

TWILIGHT ZONE!

Instructions: Use this field guide to look for the creatures below in the habitat image. When you have spotted it, write down how many you see in the circle to the right of the photo and name!

Fish

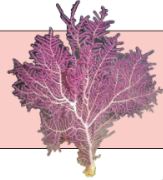
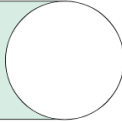
Crustacean

Coral

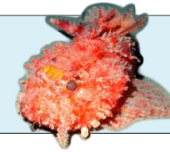
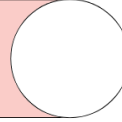
Other



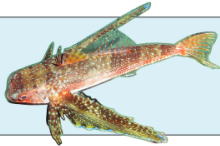
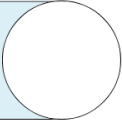
Slipper lobster



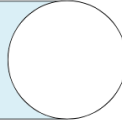
Thesea nivea



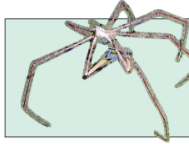
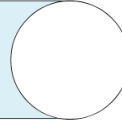
Hunchback scorpionfish



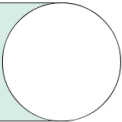
Flying gurnard



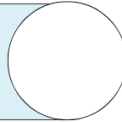
Red snapper



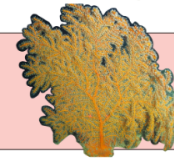
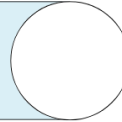
Arrow crab



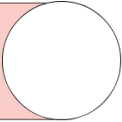
Short bigeye



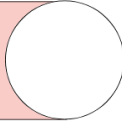
Spanish flag



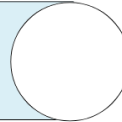
Swiftia exserta



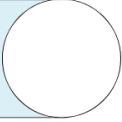
Muricea pendula



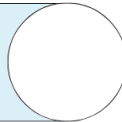
Trumpetfish



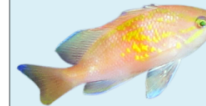
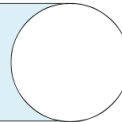
Marbled grouper



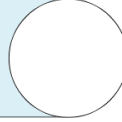
Sharpnose puffer



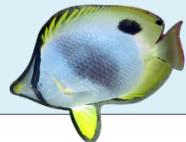
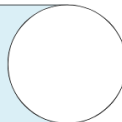
Reef butterflyfish



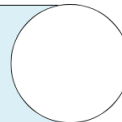
Roughtongue bass



Spotted moray eel

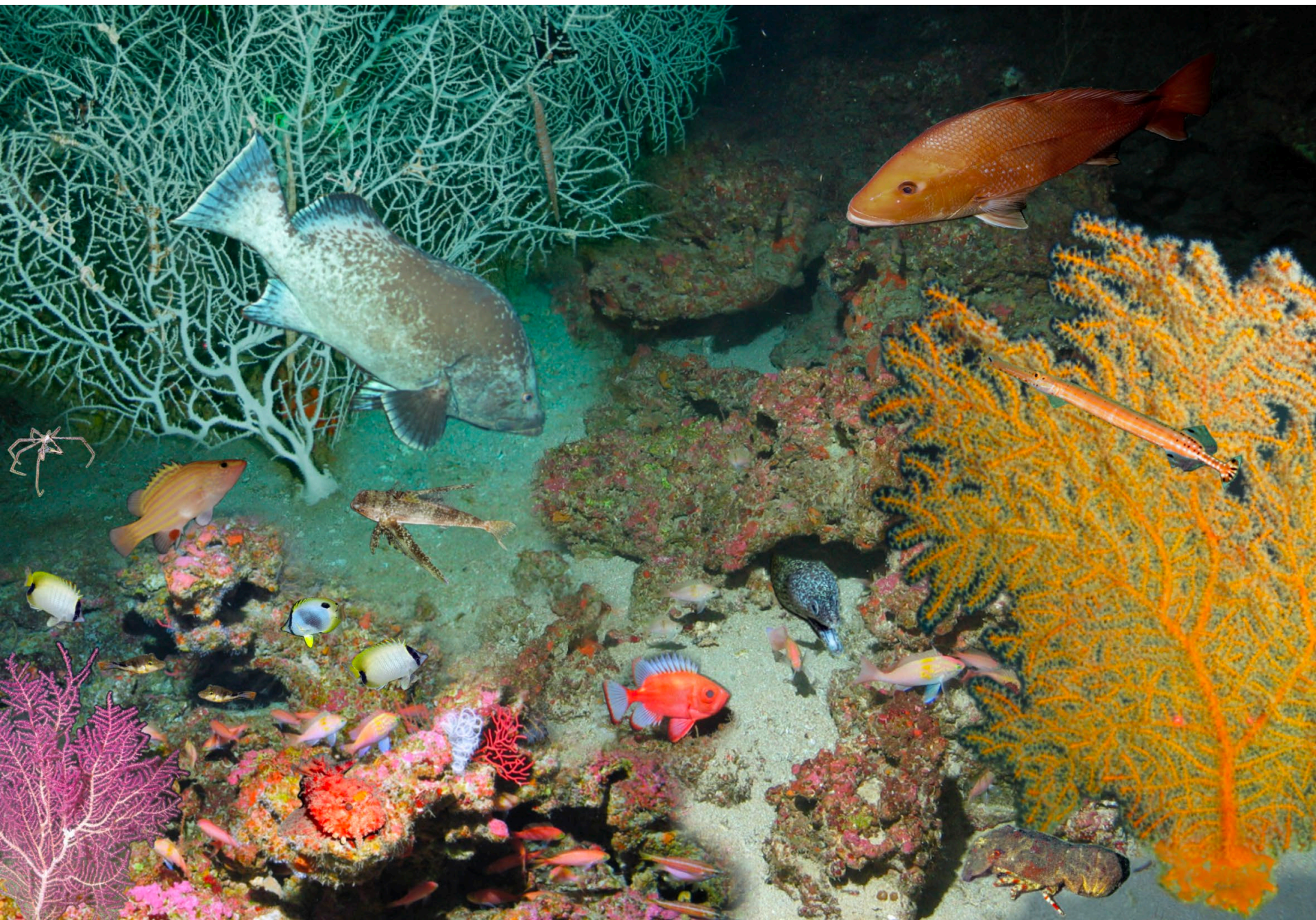


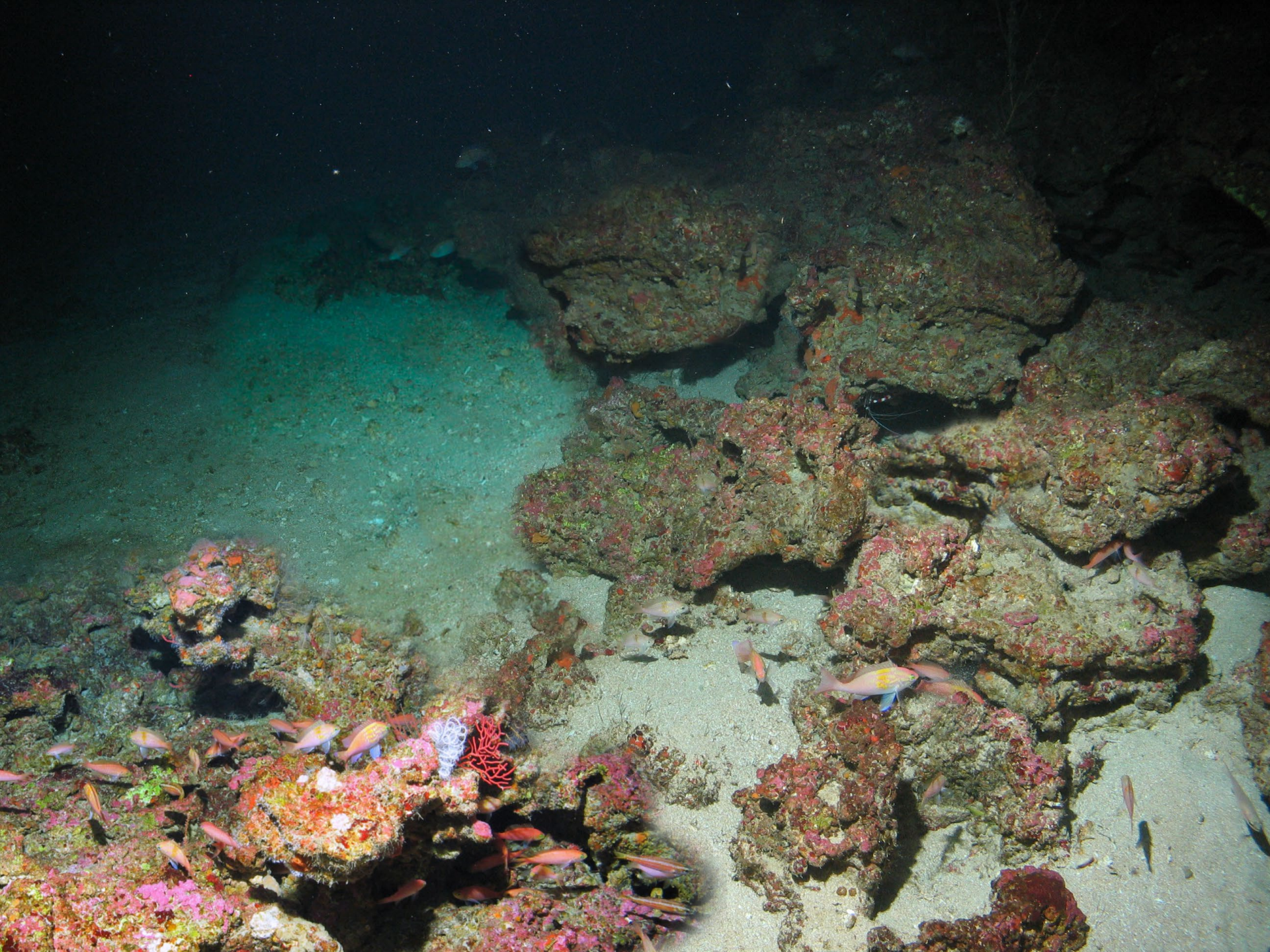
Spotfin butterflyfish

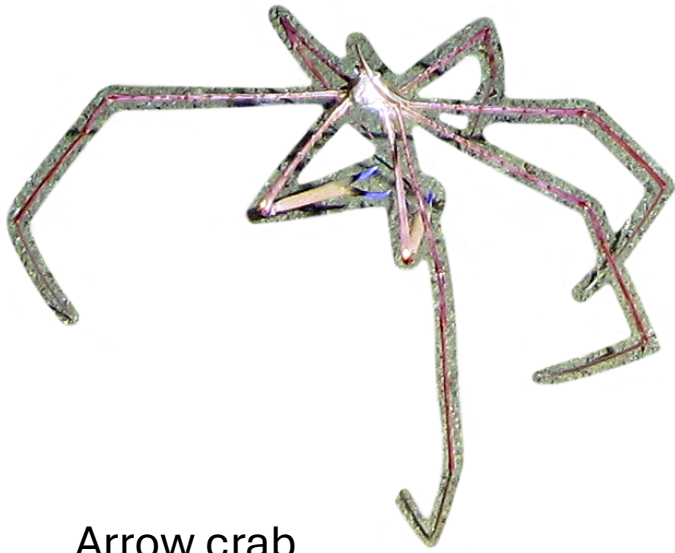


This activity was made possible through a grant from the National Marine Sanctuary Foundation with funding to restore natural resources injured by the 2010 Deepwater Horizon (DWH) oil spill from the DWH Open Ocean Trustees









Arrow crab



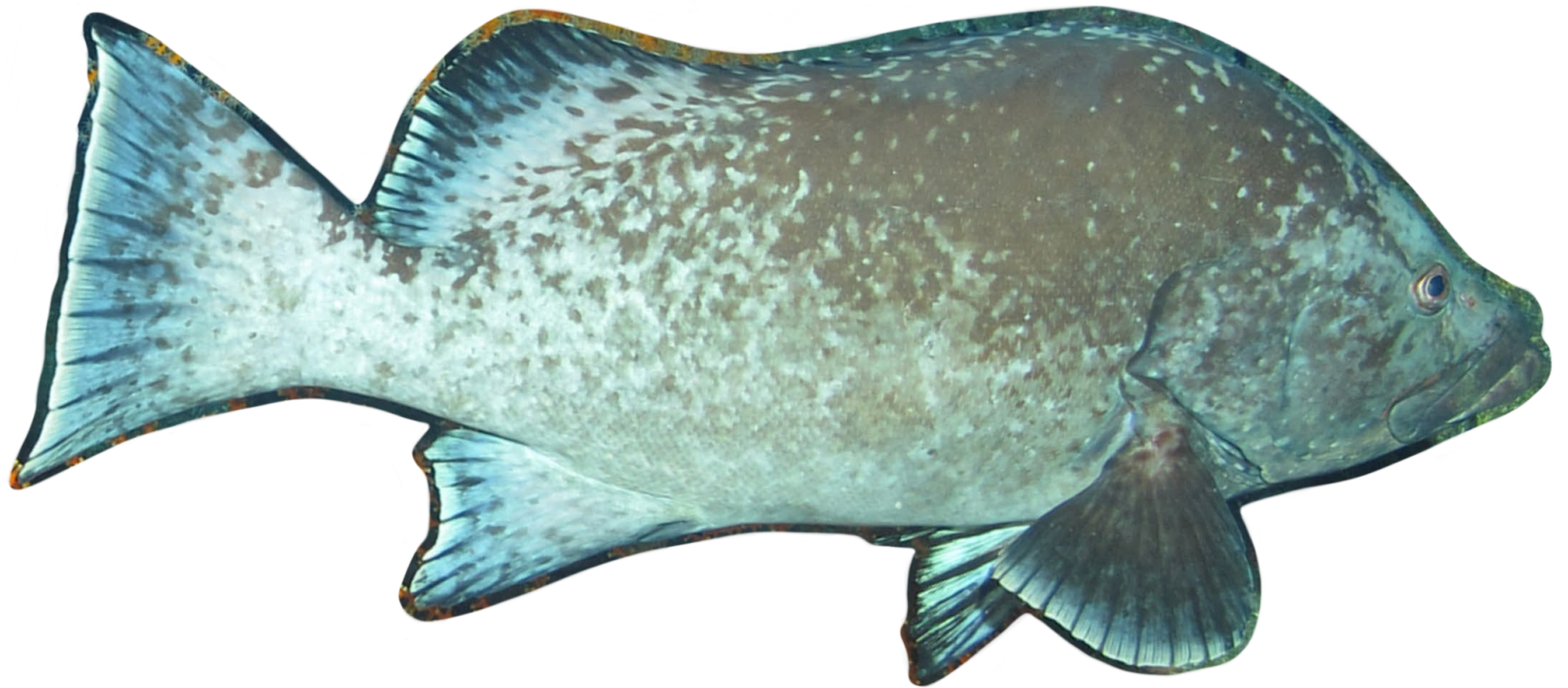
Short bigeye



Flying gurnard



Hunchback scorpionfish



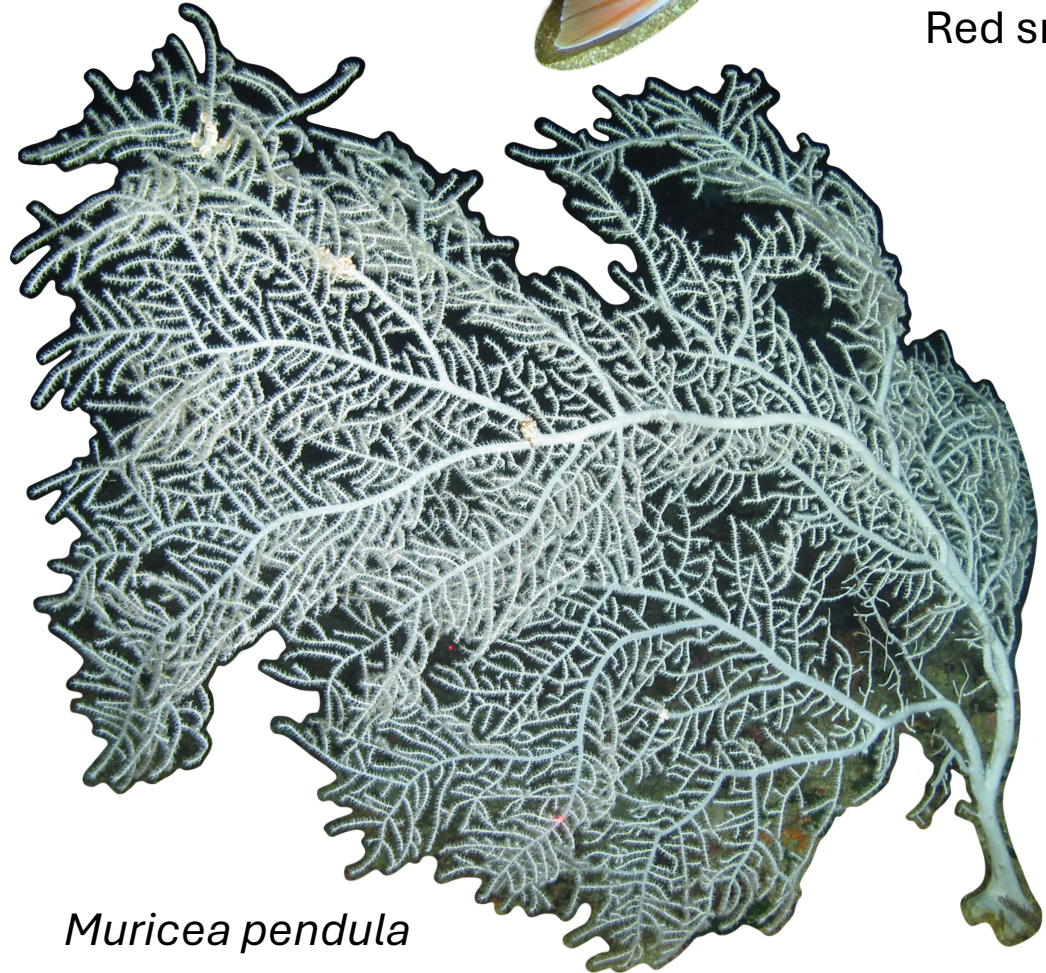
Marbled grouper



Red snapper



Reef butterflyfish



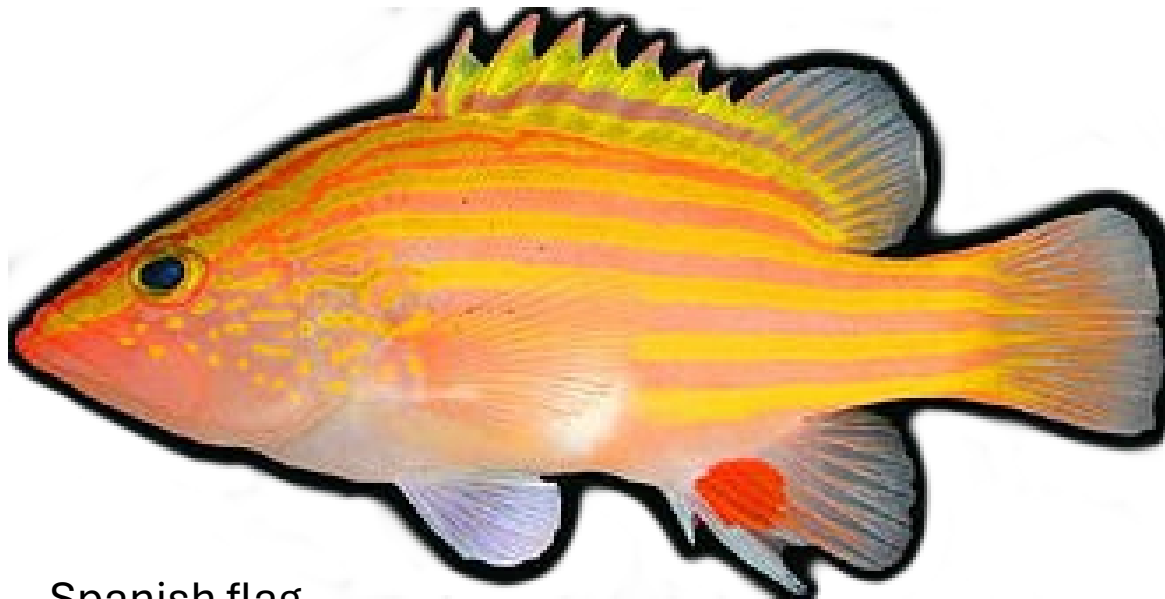
Muricea pendula



Slipper lobster



Sharpnose puffer



Spanish flag



Spotfin butterflyfish



Spotted moray eel



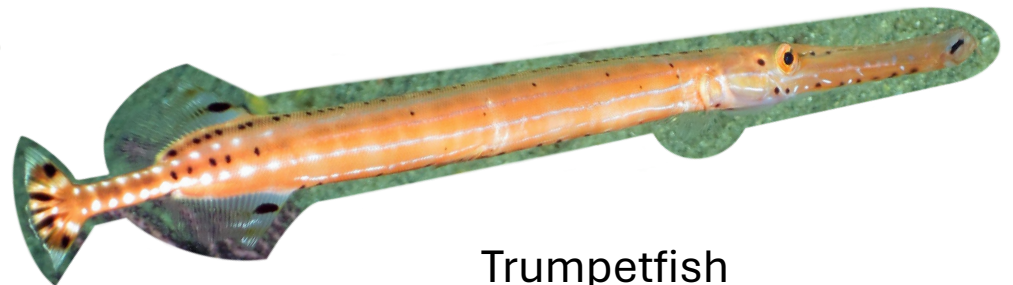
Swiftia exserta



Thesea nivea



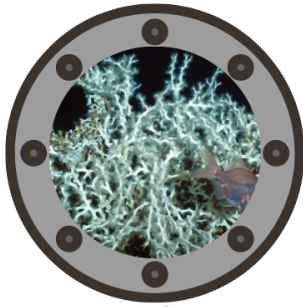
Rough tongue bass



Trumpetfish

Dusk Zone Assets

- Outline of assets:
 - Species ID guide
 - Populated mat
 - Unpopulated mat
 - Species page 1
 - Species page 2
 - Species page 3
 - Species page 4



Identify creatures of the Gulf of Mexico

980 - 2,600 ft deep

DUSK ZONE!

Instructions: Use this field guide to look for the creatures below in the habitat image. When you have spotted it, write down how many you see in the circle to the right of the photo and name!

Fish

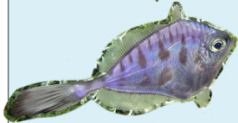
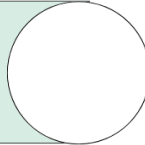
Crustacean

Coral

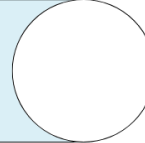
Other



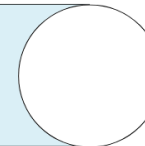
Squat lobster



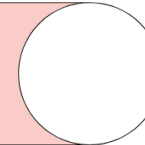
Thorny tinseltail



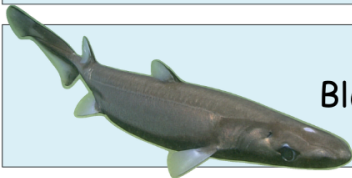
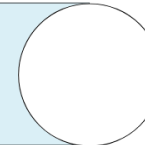
Sea toad



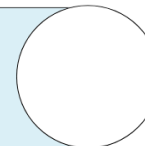
Callogorgia



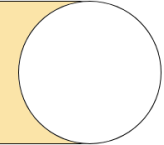
Blackbelly
rosefish



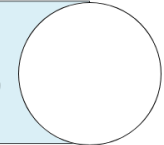
Black dogfish



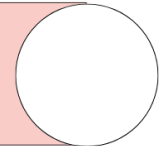
Glass sponge



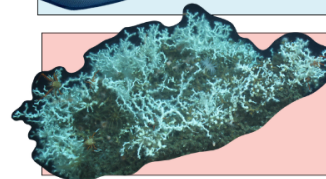
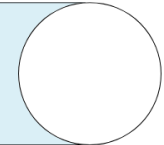
Armored searobin



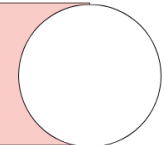
Sea whip



Atlantic grenadier

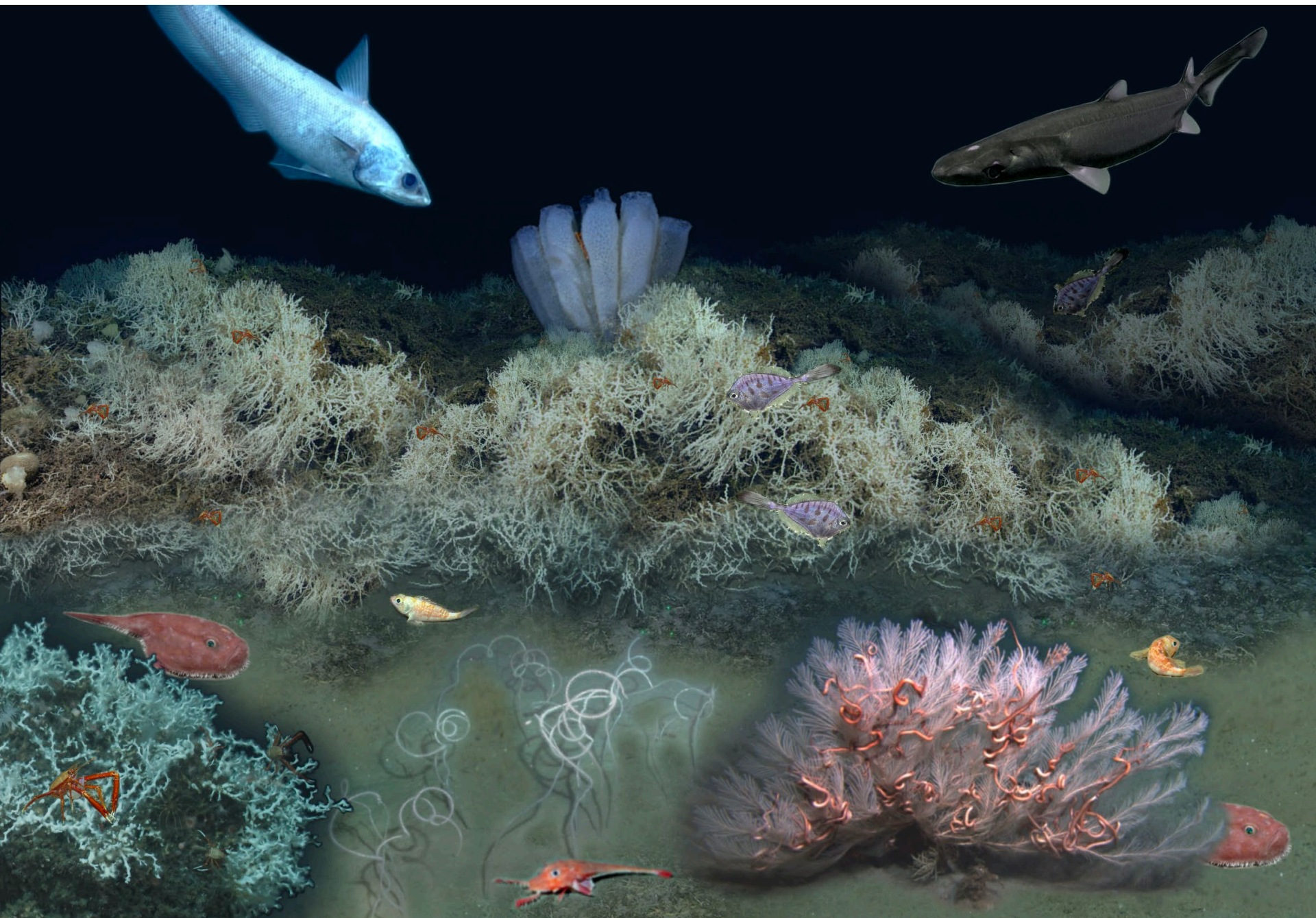


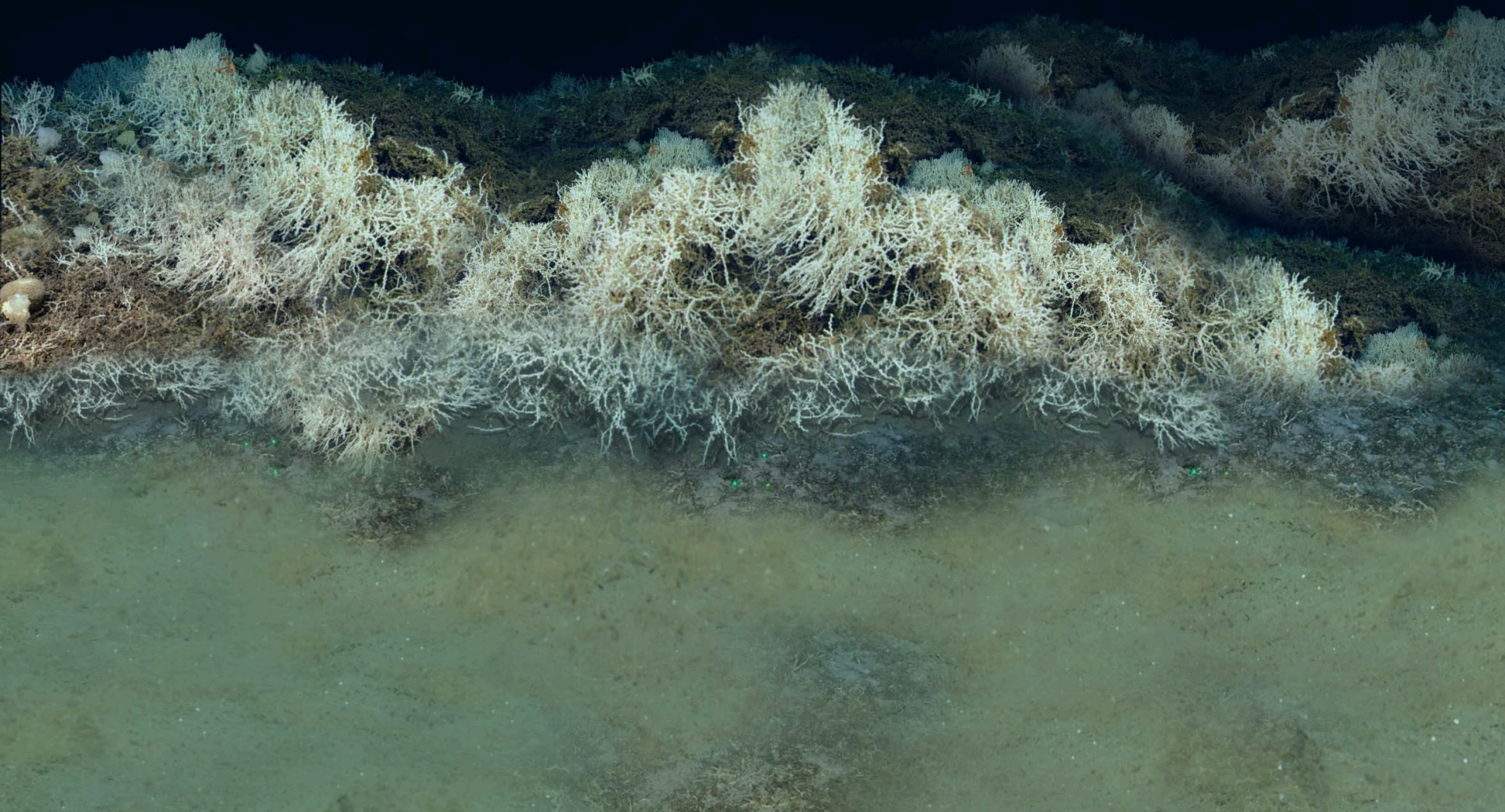
Desmophyllum
pertusum



This activity was made possible through a grant from the National Marine Sanctuary Foundation with funding to restore natural resources injured by the 2010 Deepwater Horizon (DWH) oil spill from the DWH Open Ocean Trustees

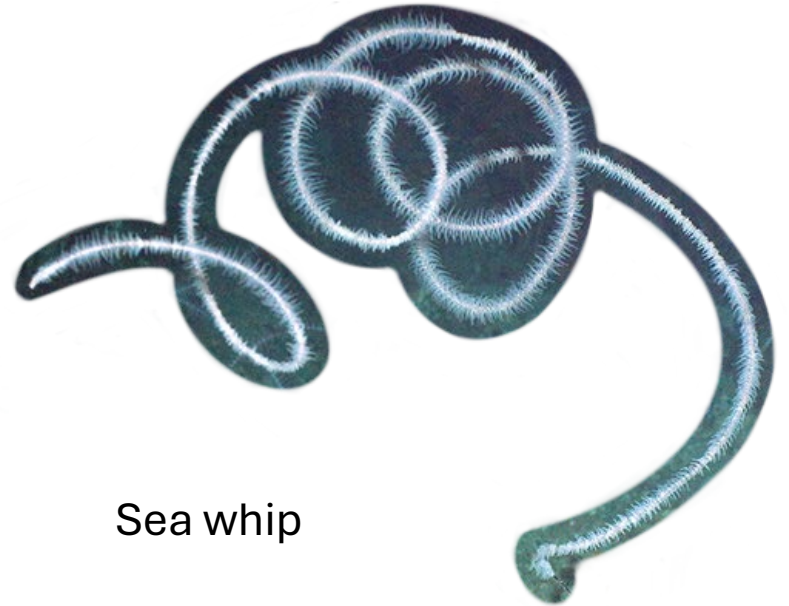




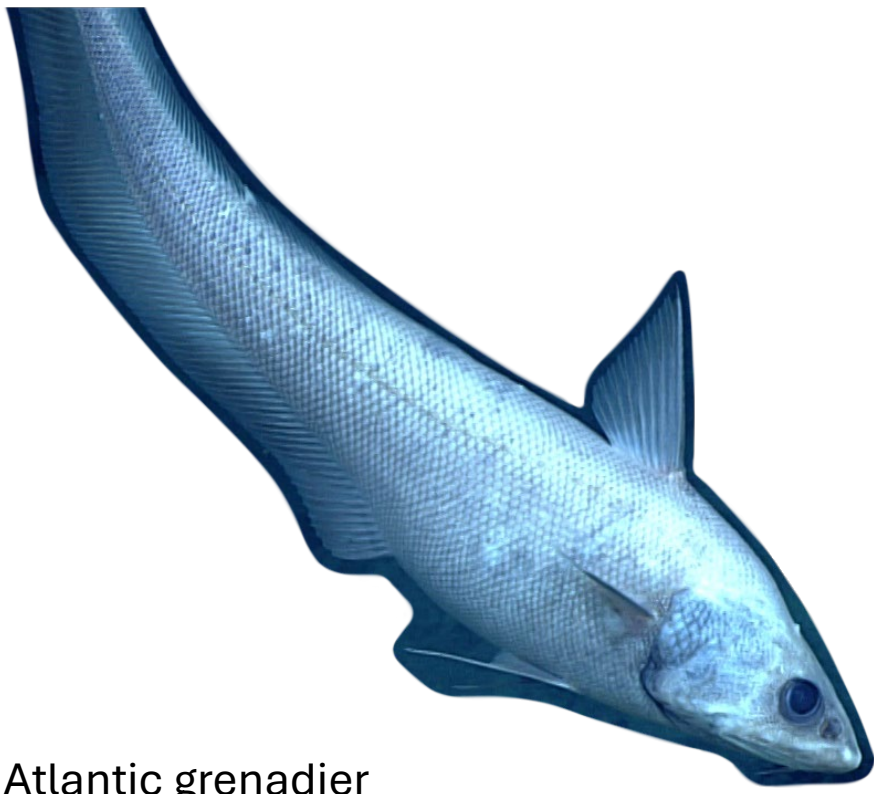




Armored searobin



Sea whip



Atlantic grenadier



Callogorgia



Blackbelly rosefish



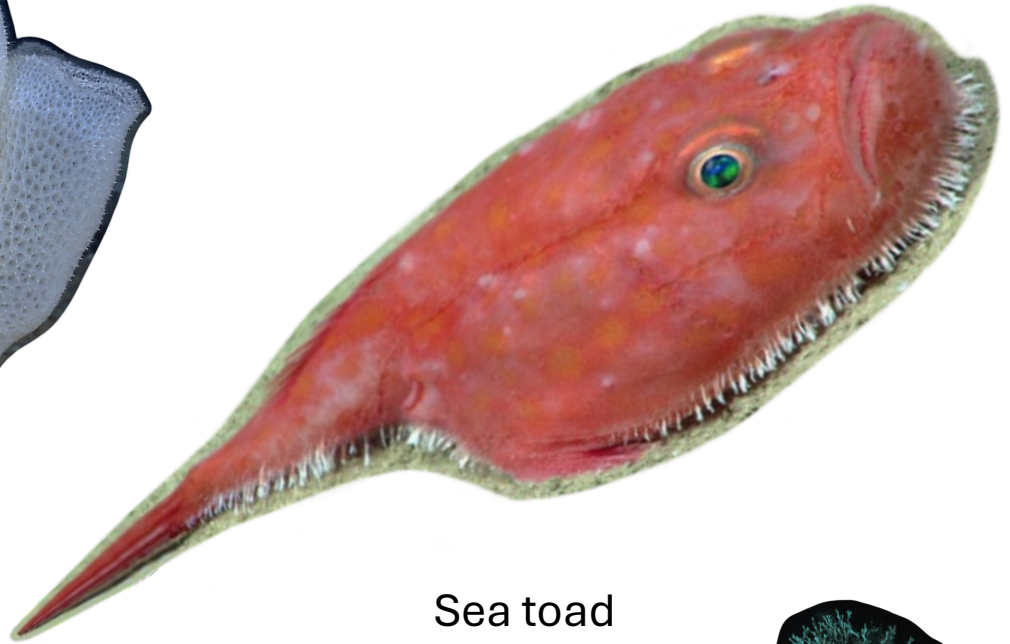
Callogorgia



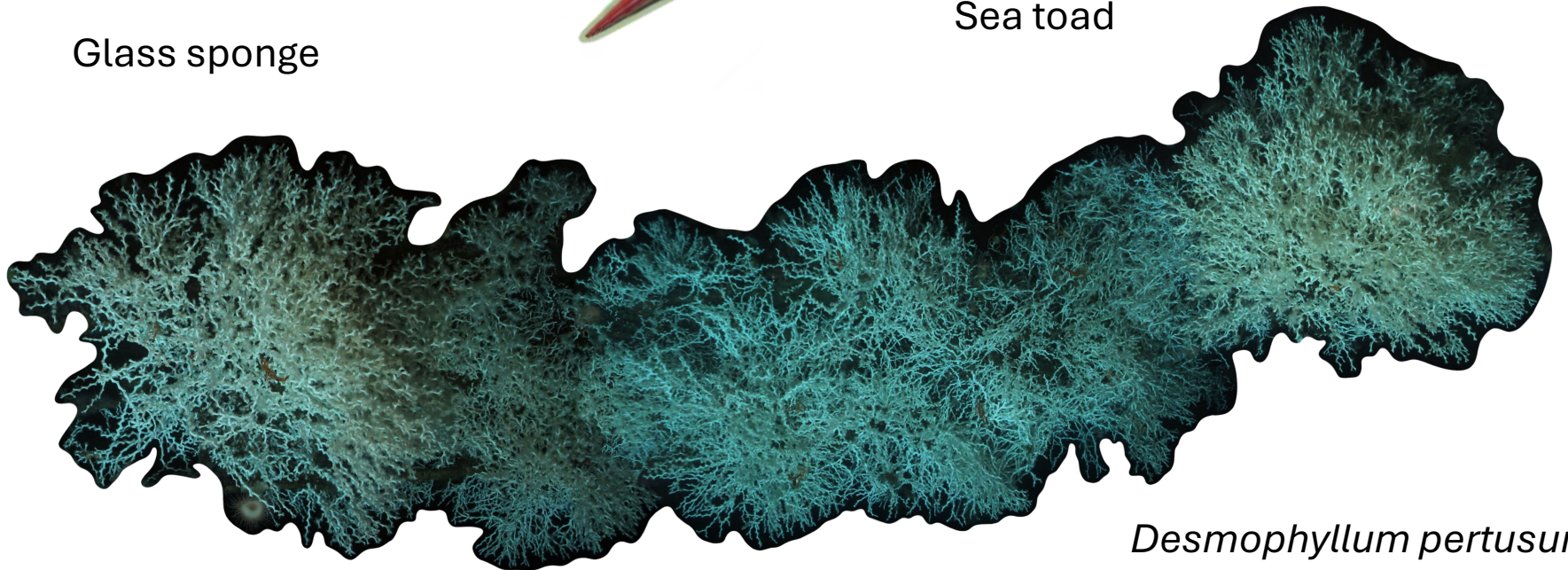
Black dogfish



Glass sponge



Sea toad



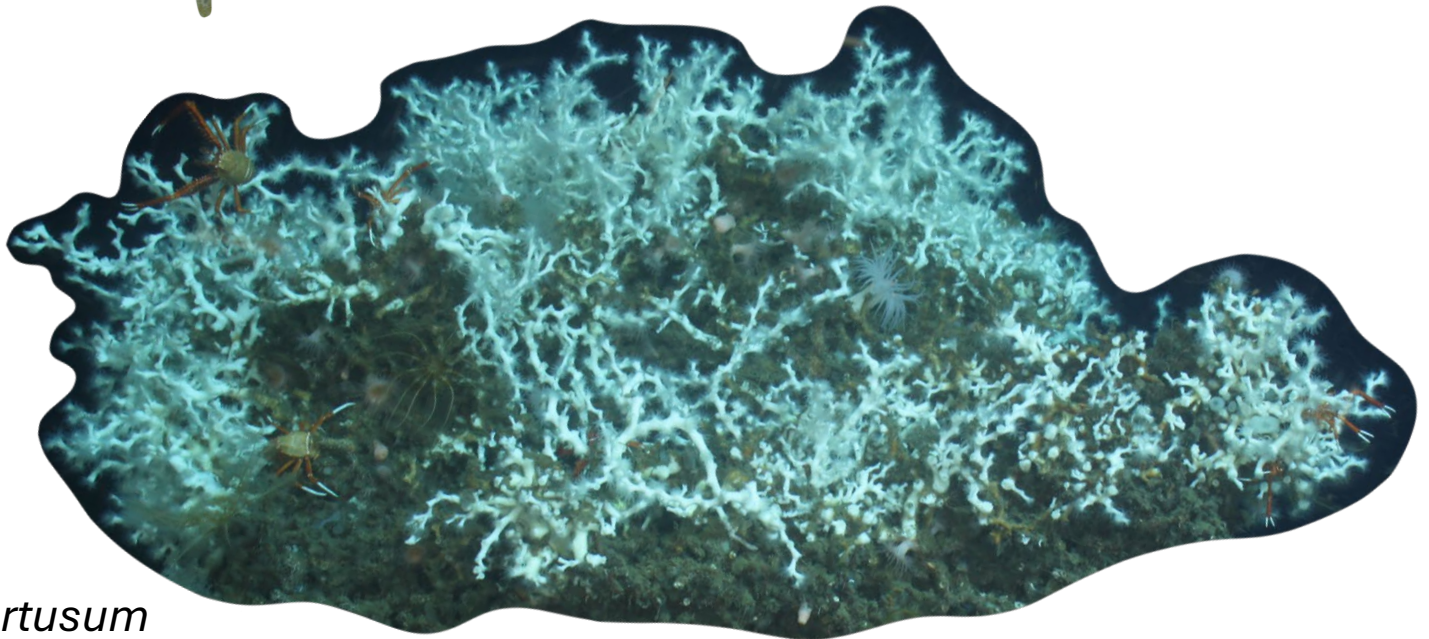
Desmophyllum pertusum



Squat lobster



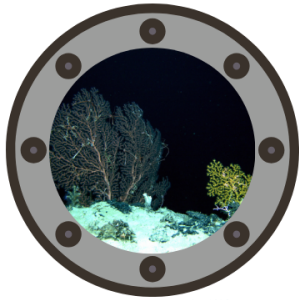
Thorny tinseltail



Desmophyllum pertusum

Midnight Zone Assets

- Outline of assets:
 - Species ID guide
 - Populated mat
 - Unpopulated mat
 - Species page 1
 - Species page 2
 - Species page 3
 - Species page 4



Identify creatures of the Gulf of Mexico

2,600 ft and deeper

MIDNIGHT ZONE!

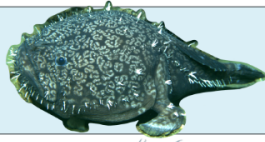
Instructions: Use this field guide to look for the creatures below in the habitat image. When you have spotted it, write down how many you see in the circle to the right of the photo and name!

Fish

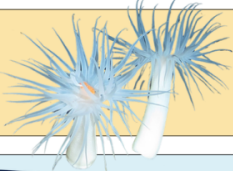
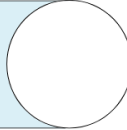
Crustacean

Coral

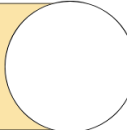
Other



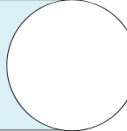
Schaefer's
anglerfish



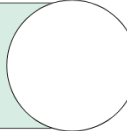
Deep-sea
anemone



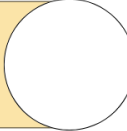
Long-nosed
chimaera



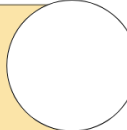
Giant isopod



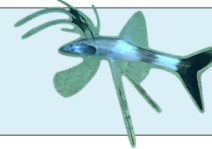
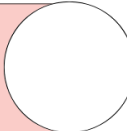
Dumbo octopus



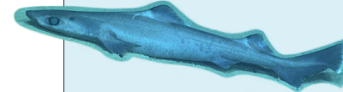
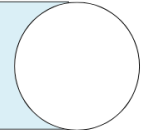
Brisingid
sea star



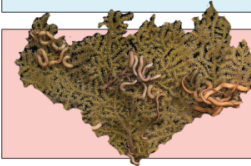
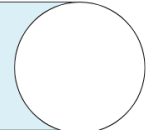
Bubblegum
coral



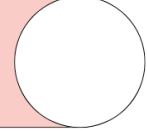
Tripod fish



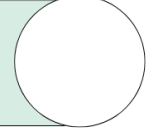
Gulper shark



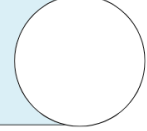
Paramuricea
biscaya



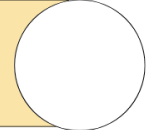
Deep-sea
red crab



Cusk eel



Sea lily

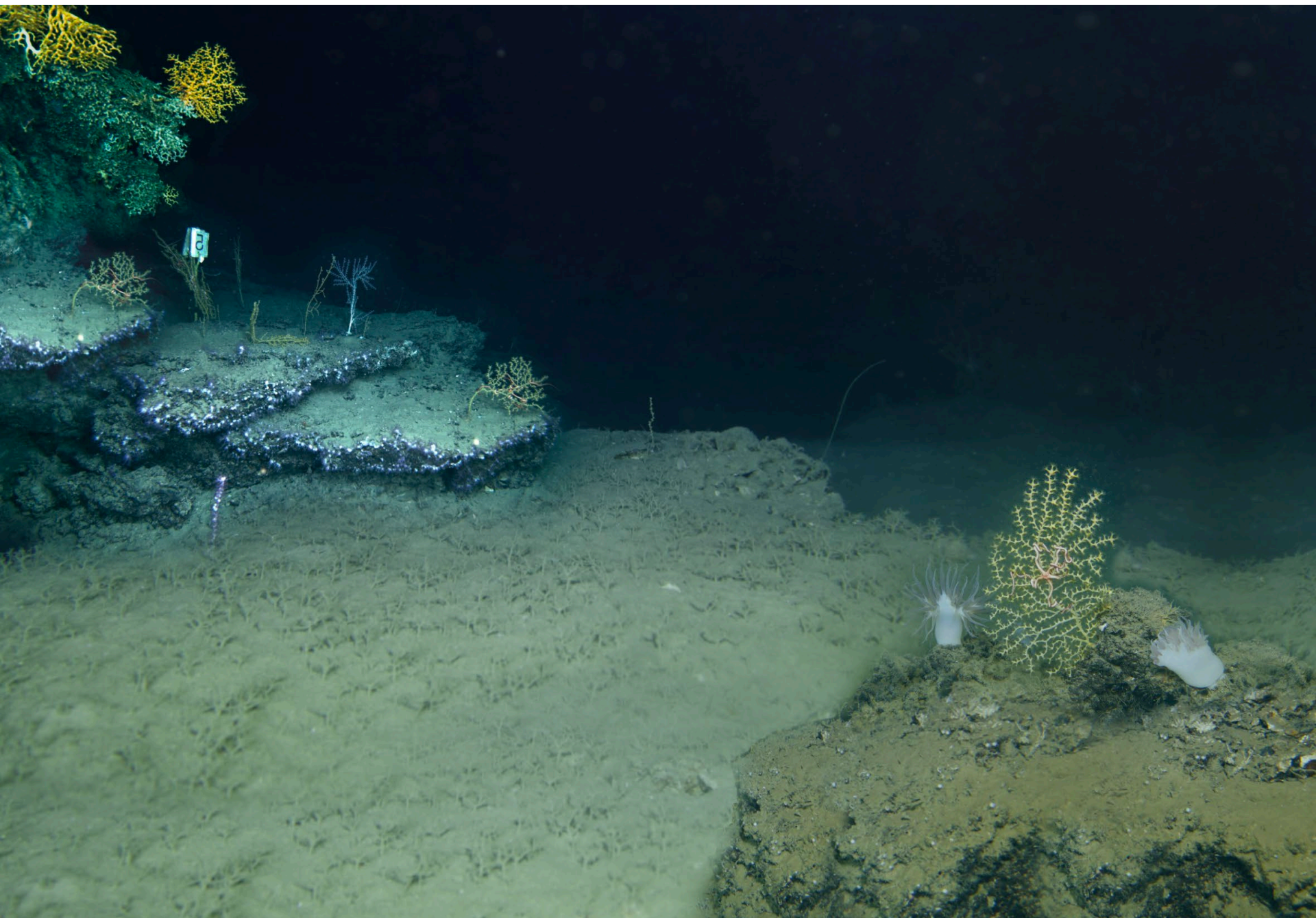


This activity was made possible through a grant from the National Marine Sanctuary Foundation with funding to restore natural resources injured by the 2010 Deepwater Horizon (DWH) oil spill from the DWH Open Ocean Trustees



National
Marine Sanctuary
Foundation







Cusk eel



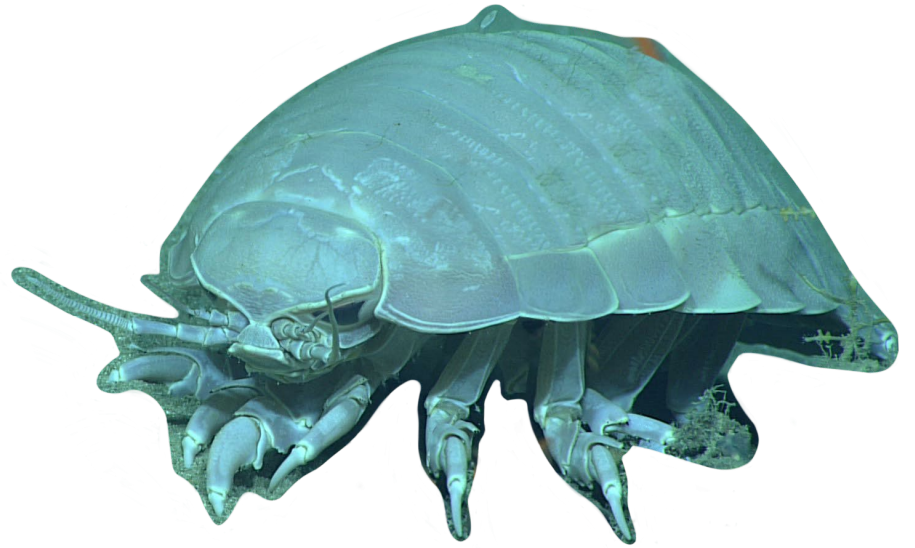
Brisingid sea star



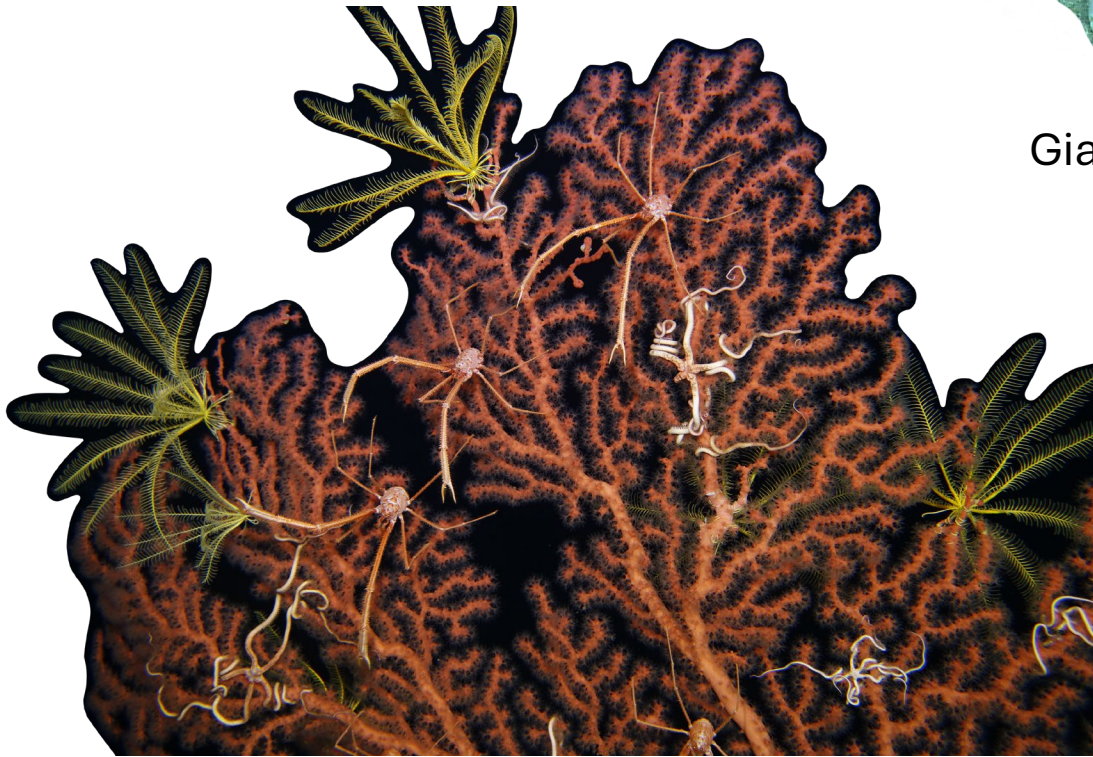
Paramuricea biscaya



Deep-sea
red crab



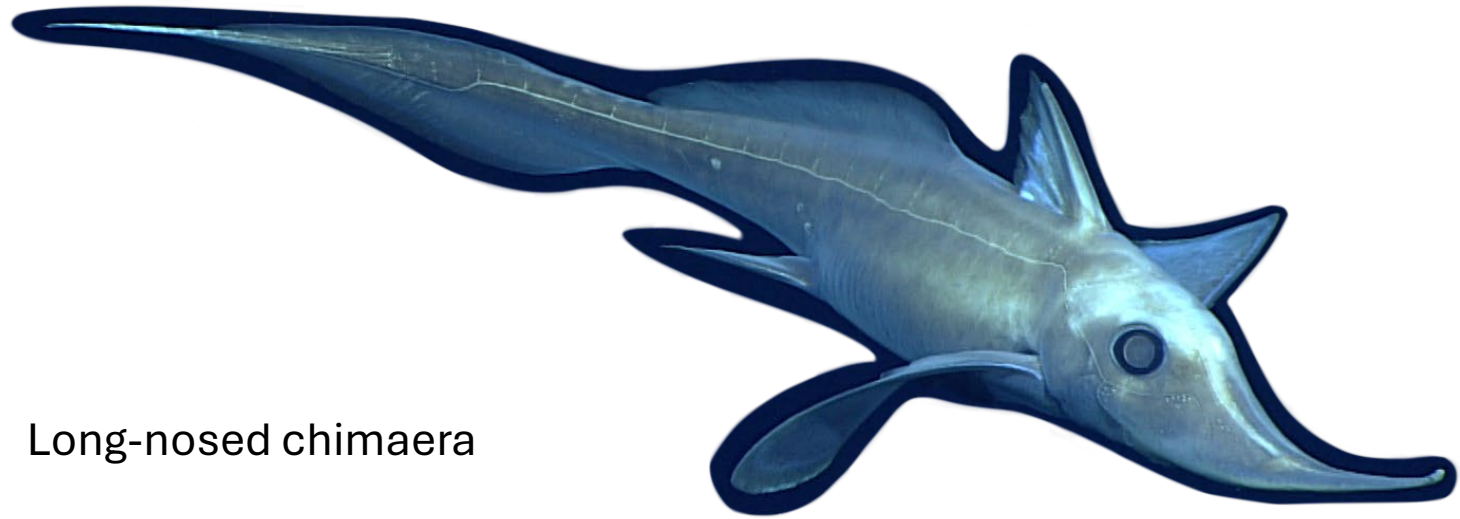
Giant isopod



Bubblegum coral



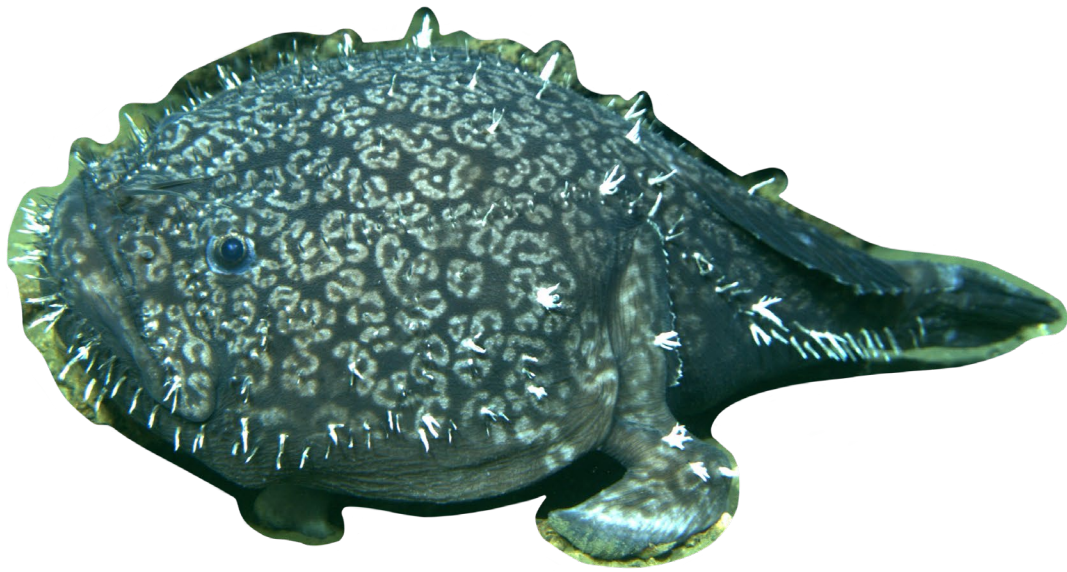
Dumbo octopus



Long-nosed chimaera



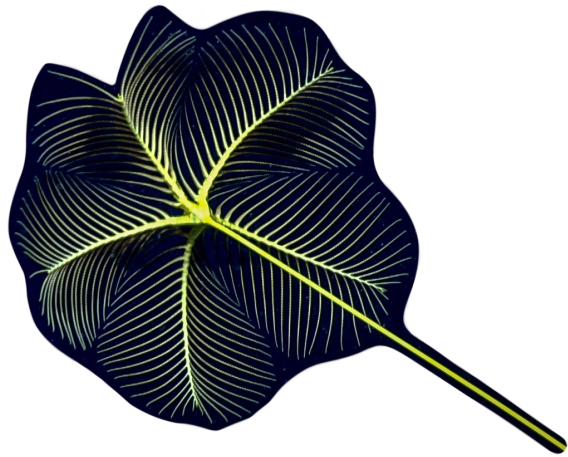
Gulper shark



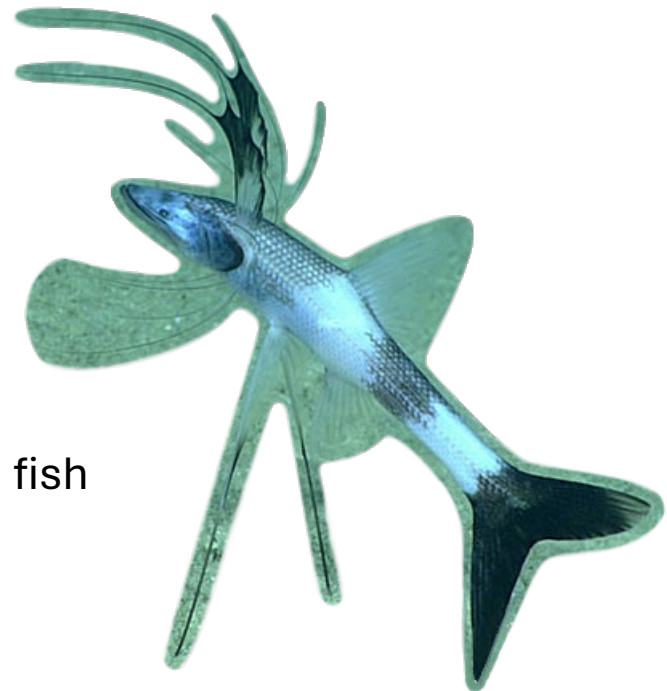
Schaefer's anglerfish



Deep-sea anemone



Sea lily



Tripod fish